



## ISTITUTO NAZIONALE DI RICERCA METROLOGICA Repository Istituzionale

Spatio-temporal visualization of light transport in complex photonic structures

*Original*

Spatio-temporal visualization of light transport in complex photonic structures / Pattelli, Lorenzo; Savo, Romolo; Burrese, Matteo; Wiersma, Diederik S. - In: LIGHT, SCIENCE & APPLICATIONS. - ISSN 2047-7538. - 5:5(2016), pp. e16090-e16090. [10.1038/lsa.2016.90]

*Availability:*

This version is available at: 11696/65198 since: 2021-01-19T17:55:25Z

*Publisher:*

NATURE PUBLISHING GROUP

*Published*

DOI:10.1038/lsa.2016.90

*Terms of use:*

This article is made available under terms and conditions as specified in the corresponding bibliographic description in the repository

*Publisher copyright*

(Article begins on next page)

## ORIGINAL ARTICLE

# Spatio-temporal visualization of light transport in complex photonic structures

Lorenzo Pattelli<sup>1</sup>, Romolo Savo<sup>1,\*</sup>, Matteo Burrelli<sup>2,†</sup> and Diederik S Wiersma<sup>1,3</sup>

Spatio-temporal imaging of light propagation is very important in photonics because it provides the most direct tool available to study the interaction between light and its host environment. Sub-ps time resolution is needed to investigate the fine and complex structural features that characterize disordered and heterogeneous structures, which are responsible for a rich array of transport physics that have not yet been fully explored. A newly developed wide-field imaging system enables us to present a spatio-temporal study on light transport in various disordered media, revealing properties that could not be properly assessed using standard techniques. By extending our investigation to an almost transparent membrane, a configuration that has been difficult to characterize until now, we unveil the peculiar physics exhibited by such thin scattering systems with transport features that go beyond mainstream diffusion modeling, despite the occurrence of multiple scattering.

*Light: Science & Applications* (2016) 5, e16090; doi:10.1038/lsa.2016.90; published online 6 May 2016

**Keywords:** diffusive approximation; disordered media; light transport; optical gating; wide-field imaging

## INTRODUCTION

Light represents a useful and versatile probe to study our world. By tracking its evolution in the domains of time, space, frequency and reciprocal space, we are able to extract a wealth of information regarding the surrounding environment. Further insight is often gained when we are technically able to track this evolution in more than one such domain simultaneously, as demonstrated by a number of recent results from diverse research fields<sup>1–8</sup>. Of the different approaches, spatio-temporally resolved techniques undoubtedly offer the most straightforward approach, as underlined by the continuously growing interest in fast photography<sup>9–11</sup> and imaging<sup>12–15</sup> applications. Further development of similar techniques is key to our ability to investigate increasingly more complex media, such as disordered or heterogeneous media, which are ubiquitous in most fields of study, from atmospheric physics to biology and cultural heritage preservation. In this context, one main task of optical investigations is to characterize the light transport process determined by multiple scattering. This characterization is typically achieved through repetitive measurements to retrieve meaningful microscopic transport parameters, such as the transport mean free path  $l_t$  and the absorption length  $l_a$ , which are directly related to the properties of the investigated medium (that is, the internal structure, composition and/or density), and are key parameters to consider from both the fundamental and the application points of view.

Here, we experimentally combine wide-field spatial imaging and sub-picosecond (ps) time resolution and show how the acquired

multi-dimensional dataset allows us to characterize previously inaccessible scattering systems and to improve the accuracy of measurements in standard situations. The ultrafast time resolution needed for such applications represents a major experimental challenge. Established fast imaging techniques involve electronic-based devices such as streak cameras or sequential scanning over a given sample in a pump-probe configuration. Despite providing very accurate results, many of these techniques are limited by low-time resolutions<sup>13</sup> or a long acquisition time<sup>14</sup>. Conversely, wide-field images at sub-ps time scales are easily obtained with optical gating techniques; however, their limited accuracy has limited their use to qualitative pattern/shadowgram recognition rather than to absolute intensity measurements across the entire field of view. In other words, optical gating has been previously exploited as a convenient method to see through a turbid medium obliterating the complex light transport arising from its structure, not to study it directly.

In this study, we investigate light transport focusing on three classes of disordered media that are extremely relevant for practical applications and yet still very difficult to characterize accurately, namely samples with limited thickness, large-scale heterogeneities and semi-transparent membranes. In each of these cases, transport properties are retrieved by exploiting, for the first time, an all-optical gating setup, which we developed to offer both wide-field acquisition and high quantitative accuracy on a sub-ps time scale. Our spatio-temporal investigation allows us to grasp the evolution of light transport in its entirety, consequently revealing effects that were either overlooked or

<sup>1</sup>European Laboratory for Non-linear Spectroscopy (LENS), Università di Firenze, Sesto Fiorentino (FI) 50019, Italy; <sup>2</sup>Istituto Nazionale di Ottica (CNR-INO), Firenze (FI) 50125, Italy and <sup>3</sup>Dipartimento di Fisica e Astronomia, Università di Firenze, Sesto Fiorentino (FI) 50019, Italy

\*Current affiliation: Laboratoire Kastler Brossel, UMR 8552, CNRS, Ecole Normale Supérieure, Université Pierre et Marie Curie, Collège de France, 24 rue Lhomond, Paris 75005, France.

†Current affiliation: Gestione SILO Srl, via di Castelpulci 14/d, Scandicci (FI) 50010, Italy.

Correspondence: L. Pattelli, Email: pattelli@lens.unifi.it

Received 23 September 2015; revised 13 January 2016; accepted 2 February 2016; accepted article preview online 5 February 2016

misinterpreted to date, including a peculiar regime occurring in ultra-thin disordered media that becomes apparent only when the spatial and temporal domains are studied simultaneously and would not be detectable with other state-of-the-art techniques. By comparing the outcome of our analysis with that of the mainstream evaluation model based on the diffusive approximation (DA), we describe how single-domain investigations performed to date are susceptible to particularly deceptive artifacts that can be clearly appreciated in a multi-domain dataset. At the same time, as widely suggested in the literature, we discuss how much more robust interpretations, even within the diffusive framework, can be given in terms of transverse transport, to which we gain direct access through our technique.

## MATERIALS AND METHODS

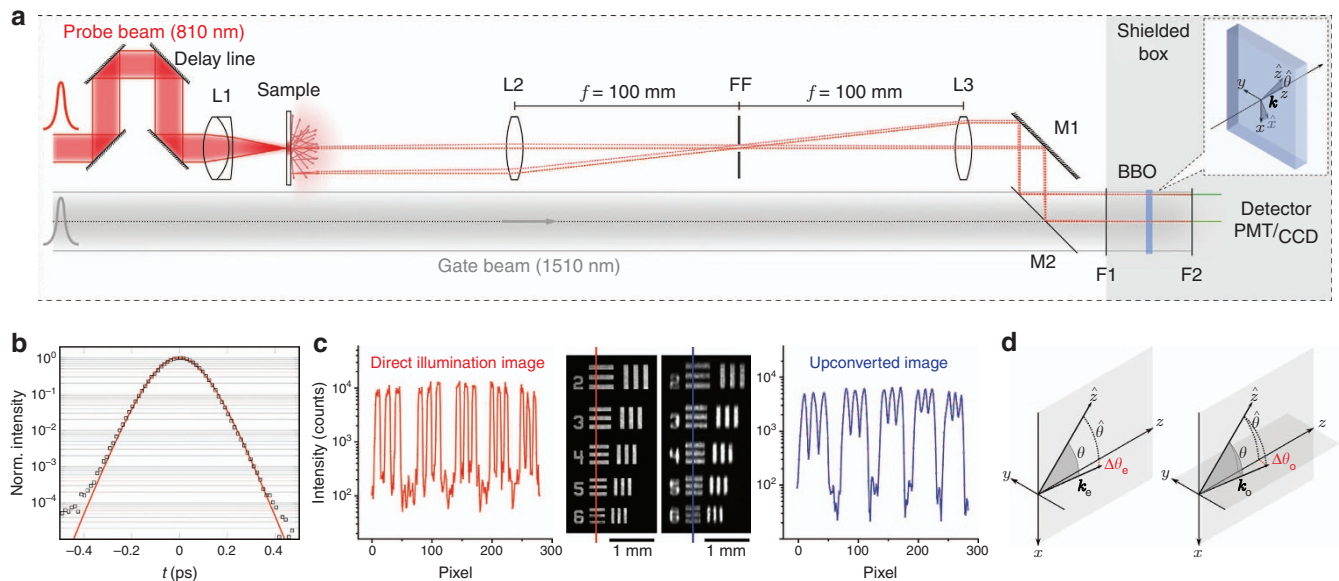
### Experimental setup

The optical scheme employed to resolve the time and space propagation of light in complex media is based on the cross-correlation gating technique<sup>16,17</sup>, shown schematically in Figure 1a. Two synchronous, collinear probe and gate pulses at different wavelengths impinge on a 2-mm-thick  $\beta$ -barium borate (BBO) crystal. When the two beams overlap both spatially and temporally, a sum-frequency signal is generated with intensity proportional to the cross-correlation of the original pulses as a function of the delay-line position. This technique has been used to fully characterize ultrafast pulse propagation<sup>18–20</sup>, generally disregarding the spatial distribution of the converted signal (Figure 1b). Nevertheless, cross-correlation gating techniques offer several advantages, such as being unaffected by optical chirp (in contrast to interferometric methods) and being compatible with collinear schemes because possible spurious second harmonic contributions from gate/probe beams, if any, can still be spectrally separated. Indeed, a collinear geometry is particularly convenient to

mitigate possible distortion of upconverted images passing through the BBO, which is a crucial aspect for accurate spatially resolved experiments<sup>21</sup>. Finally, the gate and probe beams are perfectly exchangeable, therefore allowing us to easily investigate any sample at both wavelengths.

### Upconversion imaging

To study the dynamics of light emerging from a complex specimen, we image its exit surface on the BBO crystal. There, the original image at the probe wavelength is upconverted to a different (signal) wavelength by sum-frequency generation with a gate pulse. Non-linear upconversion is a polarization- and wavevector-sensitive process, and both of these aspects must be taken into account when designing an imaging apparatus. In the current study, which addresses multiple scattering systems, the polarization sensitivity is not relevant because all polarization channels have the same optical properties. However, the setup inherently allows to investigate separately different polarization channels. In the phase-matching condition, the non-linear crystal converts only those wavevectors lying within a relatively narrow paraxial range in reciprocal space, which defines the angular acceptance of the BBO crystal (see Supplementary Information). This acceptance angle is weighted differently in the  $x$ - and  $y$ -directions of the BBO surface (that is, along the image plane, see Figure 1c and 1d). A double telecentric optical apparatus in a  $4f$  configuration ensures that the paraxial component emerging from the sample is preserved at the crystal interface. This allows us to obtain a quantitatively accurate reproduction of the original intensity distribution at each time step for each point of the object field. This accuracy condition holds as long as the transmitted wavevector distribution, however complex, does not depend on the point and time of exit, as is the case with multiple scattered light in disordered samples. In this case, the intensity carried



**Figure 1** Experimental setup and spatio-temporal resolution. (a) Two linearly polarized fs-pulses are provided by a Ti:Sa laser (probe in red) and a synchronously pumped optical parametric oscillator (gate in gray). The probe beam interacts with a slab sample, which is imaged on a BBO crystal with a  $4f$  lens configuration. A small aperture (FF) allows the  $k$  vectors to be isotropically filtered, while a dichroic mirror (M2) guarantees signal and gate spatial superposition. A long-pass (F1) and a bandpass filter (F2) block the visible and unconverted light, respectively. (b) A typical cross-correlation time-resolved measurement acquired with a PMT. A fit with the cross-convolution of two  $\text{sech}^2$  pulses returns a FWHM of 174 fs. (c) The spatial information carried by the pulse is retrieved using a CCD camera, whose resolution is influenced by the sum-frequency process. (d) A geometric sketch qualitatively showing how the phase-matching condition results in different angular acceptances in the extraordinary and ordinary directions. A slightly misaligned  $\vec{k}_e$  and a largely misaligned  $\vec{k}_o$  may result in the same  $\Delta\theta$ , therefore explaining the sharper resolution in the  $y$ -direction.

by any (fixed) subset of wavevectors can be considered to be strictly proportional to the total transmitted intensity.

As seen in Figure 1c, the reduced set of available wavevectors degrades the sharpness of the retrieved image differently along the two axes. To obtain the same resolving power in both the  $x$ - and  $y$ -directions, the aperture of a Fourier filter (FF) can be reduced to act as a tunable isotropic wavevector filter. Several alternative upconverting configurations have been reported in the literature regarding full-frame imaging applications<sup>6,22–29</sup>, most of which employ a non-linear crystal in the Fourier plane of the imaging optics rather than in the image plane. Both configurations present different advantages, and the preference for their adoption depends on the specific application. In the common Fourier plane configuration, angular acceptance limits upconversion uniformity over the entire field of view; in our case, the image is formed with a cut-off set of  $k$  vectors (thus with lower resolution) while guaranteeing spatially uniform upconversion efficiency. Therefore, we adopted the latter configuration because our diffuse signal typically does not exhibit any sharp features, and a spatially uniform response represents a critical condition for attaining our quantitative accuracy goal over multiple orders of magnitude. The generated signal is collected by a lens inside a shielded box where a flip mirror allows us to switch between different detection schemes.

We initially performed standard time-resolved measurements using a photomultiplier tube (PMT), that is, collecting intensity without any spatial resolution. Figure 1b shows a typical cross-correlation measurement of our probe pulse passing through a test target together with a fit obtained from the convolution of two squared-hyperbolic secant functions (see Supplementary Information). The measurement does not exhibit any relevant satellites over several orders of magnitude. By switching the photon counter with a CCD camera, a transient image is detected (Figure 1c) that shows the spatial resolution of our setup ( $\sim 22.6$  lp mm<sup>-1</sup> in  $x$  and  $11.3$  lp mm<sup>-1</sup> in  $y$  at 0.5 contrast), which is comparable to previous publications<sup>6,24,26,29</sup>. The final resolution is obtained by reducing the aperture of the FF to  $< 1$  mm, until the same (isotropic) resolution of  $\sim 11.3$  lp mm<sup>-1</sup> is obtained in both directions.

With regards to the overall sensitivity of the upconversion process, previous measurements performed with the same setup<sup>20</sup> give an estimate of the signal attenuation at which the noise level is eventually reached. Starting from a typical pulse energy of  $\sim 1$  nJ at a probe wavelength of 810 nm, an upconverted signal can still be detected after a damping of 8 decades, taking into account the fraction of the probe beam that is usually lost by diffuse reflection and the limited solid angle subtended by the collection optics. In addition, several other parameters can be adjusted to further enhance sensitivity, such as increasing the integration time of the detector, using a non-linear crystal with a higher upconversion efficiency and a larger angular acceptance (for example, bismuth triborate) or increasing the fluence on the crystal. To this purpose, it is particularly convenient to increase the gate beam intensity as much as possible to avoid any alteration of the sample.

### Data evaluation models

By accessing both the spatial and temporal evolution of light emerging from a complex environment, an incredibly rich picture emerges that needs to be analyzed with the proper evaluation tools. Exact modeling of energy transport in disordered samples is provided by the radiative transfer equation, which models light propagation as a random walk of energy packets undergoing scattering and absorption events. The characteristic length,  $l_s$ , over which a packet is scattered on average is called the scattering mean free path, whereas the anisotropic scattering

factor,  $g$ , expresses the average degree of directionality ranging from completely random ( $g=0$ ) to perfectly forward ( $g=1$ ). Both these parameters are directly linked to the microscopic structure of the sample and to the properties of its basic scattering elements. However, a similarity relation exists<sup>30,31</sup> equating a random walk with a certain  $l_s$  and  $g$  to a completely isotropic random walk with a rescaled mean free path of  $l_t = l_s/(1-g)$ . Thanks to this relationship, light transport is often studied in the isotropic diffusion approximation (DA) regime, where a single diffusion coefficient,  $D = l_t v/3$ , is used as the only transport parameter, with a consequent loss of insight concerning the microscopic properties of the sample. Moreover, the convenient description offered by the DA is known to be valid only when the transport mean free path is much smaller than the sample size. Conversely, its applicability to optically thin media is often debated and a standard approach to measure transport parameters in this regime is still missing. Several attempts have been made to derive extensions of the diffusive model for optically thin media<sup>32–34</sup>, and alternative techniques to measure transport parameters have been proposed that avoid using diffusion theory in the first place<sup>35–43</sup> and are based on single-domain (for example, temporal, spatial or angular) investigations.

In this study, we compare analyses of our experimental data with the mainstream diffusion theory and a Monte Carlo model of light transport. While the former method retains its appeal due to its simplicity, the latter represents a direct implementation of the radiative transfer theory, providing a computationally expensive but asymptotically exact solution to the transport problem. This allows us to unveil some of the particularly deceptive ways that the DA can fail when dealing with certain types of media.

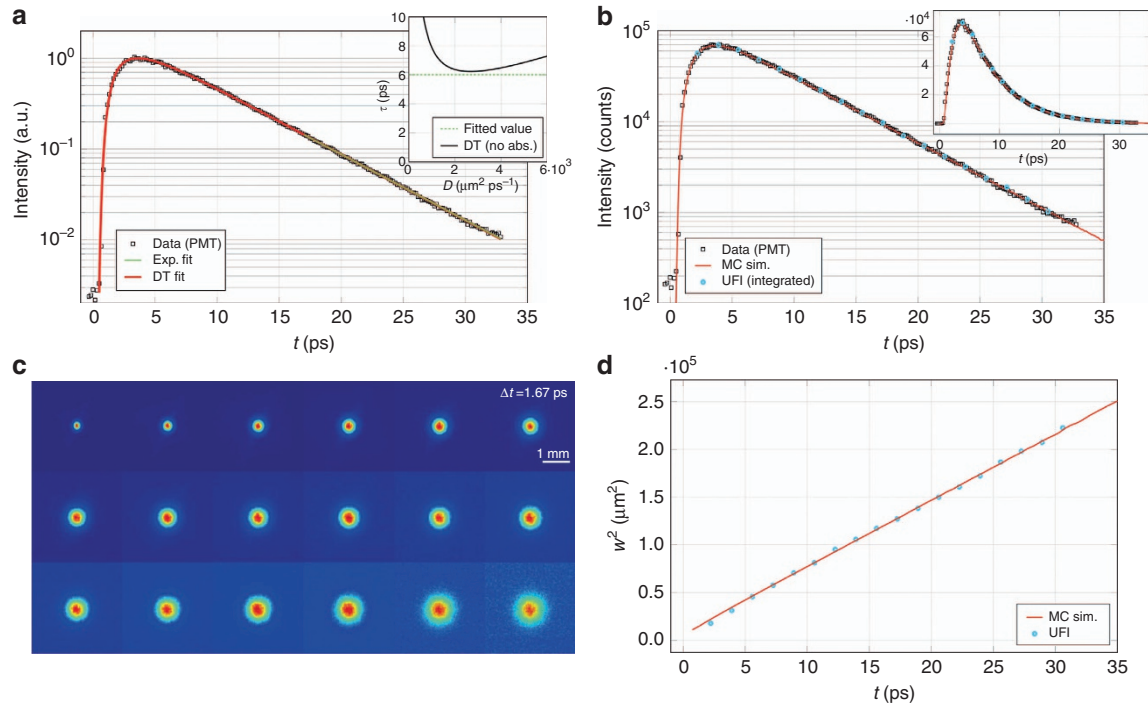
## RESULTS AND DISCUSSION

In the following section, we present a few relevant experimental cases where exploiting our newly developed ultrafast imaging (UFI) setup, we were able to reveal structural and optical features of the investigated samples that could not have been probed unambiguously with current state-of-the-art time-resolved techniques and data evaluation models. These claims are further validated and quantified by a direct comparison of the experimental data with Monte Carlo simulations. The main advantages offered by our experimental technique, as well as other possible applications, are discussed in the final subsection.

### Limited thickness artifacts

We first tested our setup with the simplest possible disordered slab, a homogeneous isotropic sample made of TiO<sub>2</sub> nanoparticles embedded in a polymer matrix (see Supplementary Information). The sample thickness was 203  $\mu$ m, with an average refractive index at 810 nm of  $n = 1.52$ .

Figure 2a shows a normalized time-resolved transmission profile, in addition to a fit using the DA relation, which shows excellent agreement with the experimental data. The fit was performed with the diffusion coefficient,  $D$ , and absorption coefficient,  $\mu_a = l_a^{-1}$ , as the only free parameters, assuming  $D = l_t v/3$  and  $v = c/n$ . The fit gives  $l_t = 24.1 \pm 0.6$   $\mu$ m and  $l_a = 12.0 \pm 1.1$  mm (albedo 0.998). The ratio between the thickness of the slab and its transport mean free path (referred to as the optical thickness) is commonly used to express the amount of multiple scattering in a sample. According to the fit, we obtained an optical thickness of  $\sim 8.4$ ; a value of 8 is usually considered to be the rule-of-thumb lower limit above which diffusive transport is regarded as an acceptable approximation<sup>44</sup>. Nonetheless, the retrieved coefficients predicted a total absorption of  $A \approx 8\%$ , which



**Figure 2** Homogeneous sample data analysis. **(a)** Experimental data (black squares) acquired with the photon counter (PMT) compared to an exponential fit (solid green line), and a diffusion theory fit with  $D$  and  $\mu_a$  as free parameters (solid red line). The inset shows the asymptotic decay time expected according to the DA for a sample with  $L=203\ \mu\text{m}$ ,  $n=1.52$  and  $\mu_a=0\ \mu\text{m}^{-1}$  (solid black line). The experimentally retrieved value (dashed green line) is incompatible with the DA unless some absorption is introduced. **(b)** A Monte Carlo (MC) solution (solid red line) of the radiative transfer equation showing perfect agreement with the experimental data for a non-absorbing sample. The integrated intensity from UFI frames and the PMT data (cyan circles) are shown. **(c)** A set of frames acquired at different delays with our UFI setup. Each frame is averaged over different disorder realizations and is displayed normalized to its own maximum intensity. **(d)** Comparison of the experimental and simulated mean square width.

is much higher than expected because both the host polymer and the  $\text{TiO}_2$  nanoparticles are known to have vanishing absorption at near infrared wavelengths. Even considering a non-absorbing sample with an equal thickness and refractive index, the lowest possible decay time that diffusion theory could predict ( $\tau_{\text{min}}^{\text{DA}} = 6.23\ \text{ps}$ , see Figure 2a, inset) would still be appreciably longer than that determined experimentally ( $\tau = 6.01 \pm 0.08\ \text{ps}$ ). The DA accommodates for such discrepancies by introducing an absorption artifact. This can intuitively be seen in its relationship for the asymptotic decay time,  $\tau^{-1} = \pi^2 D / L_{\text{eff}}^2 + \mu_a v$  (where  $L_{\text{eff}}$  is the effective thickness depending on the refractive index boundary conditions), the value of which can be made arbitrarily small by assuming the presence of absorption.

In this case, the analysis of the time evolution of the mean square width of the transmitted profile is particularly interesting in that it is inherently free from this absorption-to-scattering crosstalk effect<sup>13,45,46</sup>. The mean square width is defined as the variance,  $w^2(t) = \int r^2 I(\vec{r}, t) d^2 \vec{r} / \int I(\vec{r}, t) d^2 \vec{r}$ , where  $\vec{r}$  is a two-dimensional vector in the transmission plane, and can be determined if the full spatio-temporal evolution of the profile  $I(\vec{r}, t)$  is known. Due to its normalization, any amplitude factor (such as absorption) applied to the profile will cancel out exactly at any time, leaving the mean square width unaffected. We therefore further investigated the sample using our imaging configuration (which could in principle also substitute the photon counter following frame integration, see Figure 2b). The mean square width, as extracted by the obtained frames, clearly shows a linear increase (Figure 2c and 2d) that can easily be interpreted within the DA, which predicts  $w^2(t) = 4Dt$ . The experimental slope, as obtained from a linear fit, corresponds to

$D_{\text{exp}}^{\text{fit}} = 1746 \pm 21\ \mu\text{m}^2\ \text{ps}^{-1} \rightarrow l_t = 26.6 \pm 0.3\ \mu\text{m}$ , which is appreciably larger than the value retrieved from the time-resolved curve. We therefore ran Monte Carlo simulations (see Supplementary Information) to resolve this discrepancy, and eventually succeeded in simultaneously reproducing both the experimental time-resolved and mean square width evolution datasets using a *single* transport parameter,  $l_t$  (Figure 2b and 2d). The Monte Carlo inversion procedure gives a value of  $l_t = 25.5 \pm 0.5\ \mu\text{m}$  (again corresponding to an optical thickness of  $\sim 8$ ), which is perfectly compatible with both datasets without introducing absorption.

It should be noted that the transport mean free path, as retrieved from the mean square width slope in the diffusive framework, results in just a 4% overestimation of the actual best value retrieved by the Monte Carlo simulations. Such a level of accuracy is acceptable for a wide number of applications, where UFI techniques could be exploited to extend the applicability of the DA in this intermediate thickness range. Moreover, as widely suggested in the literature<sup>45,46</sup>, estimating transport properties from the mean square width rather than from time-resolved data is much more accurate and straightforward because in the former case, *a priori* knowledge of the absorption coefficient, refractive index contrast and sample thickness is not required. Indeed, the simple  $4Dt$  dependence does not involve these parameters or the extrapolated boundary conditions. This simple determination of the slope is also insensitive to the exact determination of the time axis origin and the exact time-window considered for the fitting, both of which represent long-standing issues in the evaluation of time-resolved data<sup>47,48</sup>. In addition, for the same reason that the mean square width is independent of the absorption, it is also effectively

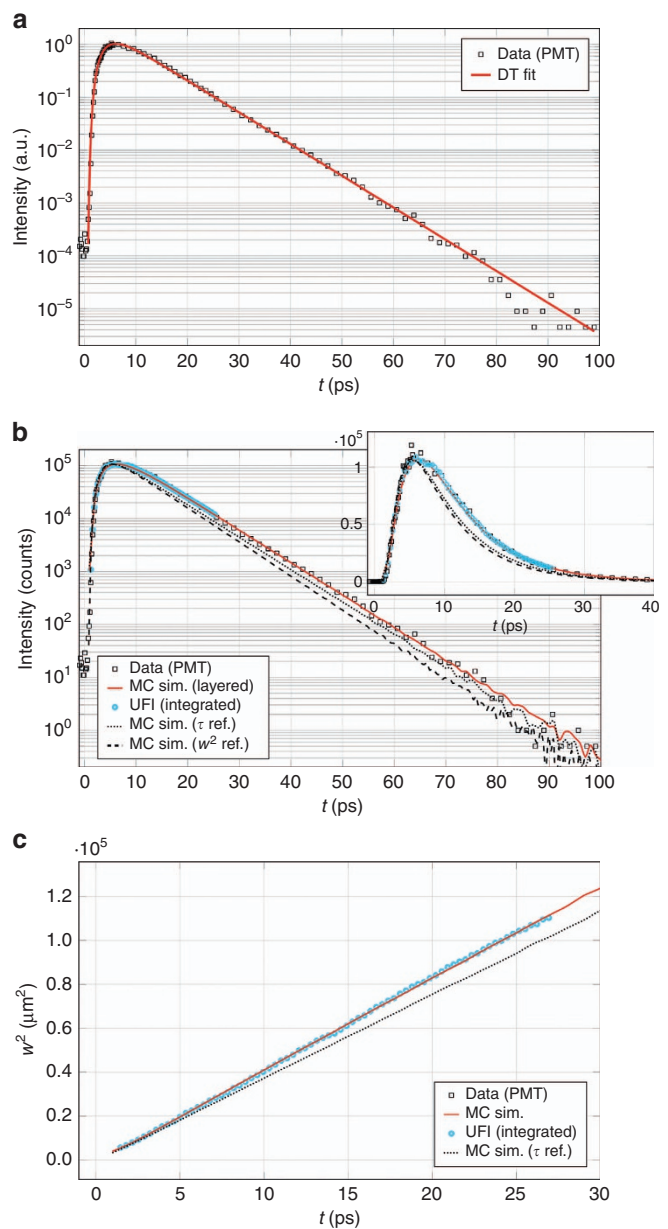
independent of the integration time, as well as of any laser power fluctuations. Interestingly, the time-resolved DA can deceptively compensate for its limited accuracy by introducing an absorption artifact, but lacks a solution when the correct value of absorption is considered. This point is particularly relevant for investigations of optically thin specimens, such as biological tissues<sup>49</sup>.

As previously mentioned, our UFI technique is capable of replacing completely integrated measurements with comparable sensitivity (Figure 2b). Exploiting the full spatio-temporal information, the resulting set of frames can be decomposed into a mean square width and a time-resolved curve, providing two almost independent datasets in a single measurement session. Indeed, the former does not depend on the integrated intensity of the individual frames, whereas the latter is primarily linked to the transport along the  $z$ -axis. In this respect, our perfectly matching Monte Carlo validation, which is conducted independently on two experimental datasets that depend differently on different sets of parameters, is a clear indication of the quantitative accuracy and reliability of our setup over many orders of magnitude in both the temporal and spatial domains.

### Large-scale heterogeneity artifacts

We also used our UFI technique to investigate more diverse and complex media. A new polymer slab ( $L=190\ \mu\text{m}$ ) with a roughly doubled scatterer density was manufactured to obtain an optically thicker sample. Again, a perfect fit could be obtained in the diffusive framework (Figure 3a) if the presence of absorption was included at an unlikely integrated value for the total absorption,  $A\approx 7\%$  ( $l_t=12.0\pm 0.4\ \mu\text{m}$  and  $l_a=13.2\pm 1.2\ \text{mm}$ ). In sharp contrast to the previous experiment, a non-absorbing Monte Carlo fit was unable to reproduce the time-resolved data, even when the observed experimental decay time was perfectly matched (Figure 3b, dotted black line). Furthermore, the mean square width exhibited a steeper than expected slope ( $D_{\text{exp}}^{\text{fit}}=1050\pm 13\ \mu\text{m}^2\ \text{ps}^{-1}\rightarrow l_t=16\pm 0.2\ \mu\text{m}$ ) as if the diffusion process was enhanced along the in-plane directions, as shown in Figure 3c.

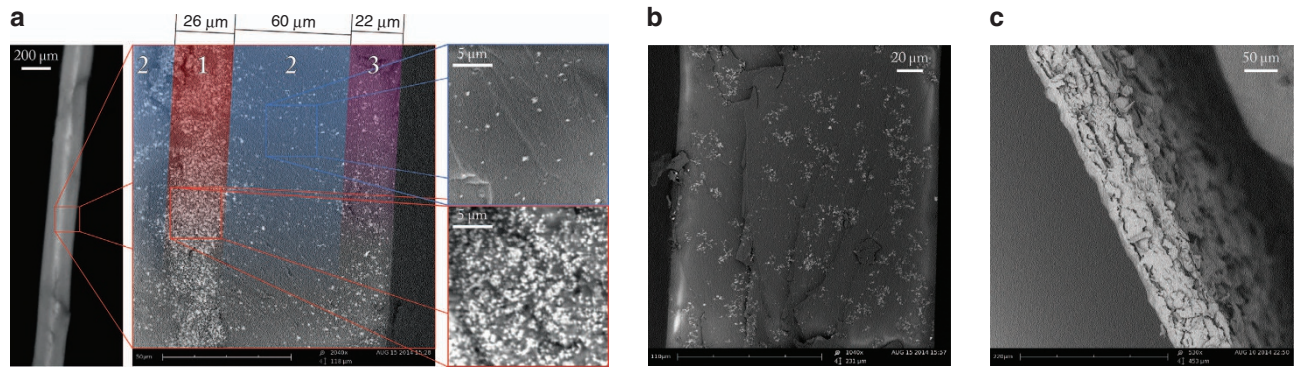
Driven by this discrepancy, we further investigated the sample with a scanning electron microscope (SEM), revealing a heavily layered modulation of the scatterer density compared to the more homogeneously dispersed one in our first sample (Figure 4a and 4b). Taking advantage of the versatility of Monte Carlo simulations, we modeled our sample after our SEM images as being composed of five layers with three different thicknesses and densities arranged symmetrically with respect to the central layer. A new Monte Carlo brute force fit assuming a fixed geometry and three free parameters,  $l_{t1}$ ,  $l_{t2}$  and  $l_{t3}$ , was eventually able to perfectly reproduce both the time-resolved and mean square width data simultaneously, as shown in Figure 3b and 3c. We obtained transport mean free paths of  $l_{t1}=3.5\pm 0.5\ \mu\text{m}$ ,  $l_{t2}=21.5\pm 0.5\ \mu\text{m}$  and  $l_{t3}=11.0\pm 0.5\ \mu\text{m}$ , respectively, for the high, low and intermediate-density layers. The absorption coefficients were all set to  $\mu_a=0\ \text{mm}^{-1}$ . In this case, the mean square width/time-resolved decomposition clearly allowed an unexpected degree of complexity to be revealed and characterized thanks to the rigid constraints of the double boundary datasets. Resolving this composite structure showed that a layered heterogeneity can, in principle, mimic the effects of anisotropic transport and therefore revealed a previously unaddressed physical effect. This is especially relevant given the pervasiveness of layered media (for example, coatings, atmospheric physics and biological tissues), which often exhibit counter-intuitive features that standard time-resolved techniques are still unable to explain, as in the case of light transport across the human forehead<sup>51</sup>.



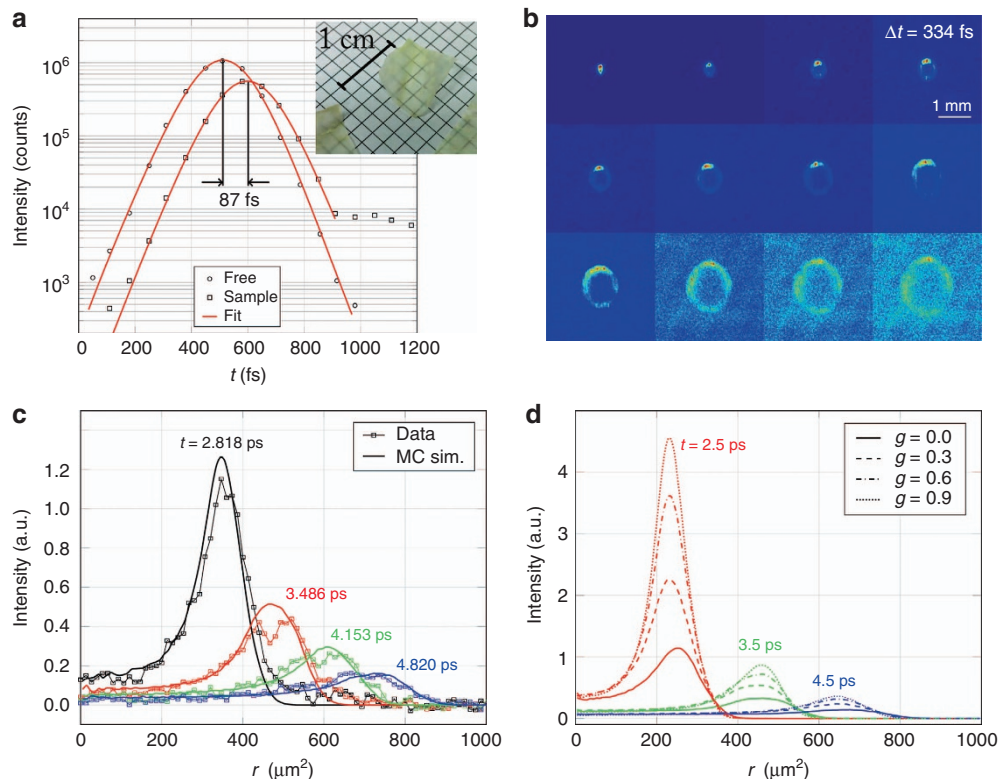
**Figure 3** Heterogeneous sample data analysis. (a) Photon counter (PMT) data (black squares) and best diffusive (DA) fit (solid red line) giving  $l_t=12\ \mu\text{m}$  and  $l_a=13.2\ \text{mm}$ . (b, c) Comparison of the PMT and UFI data to a multi-layered simulation (solid red line) and two homogeneous simulations. The black-dotted line refers to the simulation that reproduced the experimental decay time ( $l_t=14.2\ \mu\text{m}$ ), while the black-dashed line shows the simulation that reproduced the mean square width slope ( $l_t=15.7\ \mu\text{m}$ ). The decay-time-reproducing simulation fails to reproduce the mean square width slope, while the simulation that shows perfect agreement with the mean square width slope poorly matches the time-resolved decay, therefore revealing the inconsistency of the homogeneity hypothesis. The Monte Carlo (MC) curves were rescaled to match the experimental peak count values.

### Ultra-thin samples

Despite the advantages offered by decomposition into a mean square width and a time-resolved curve, it is clear that the raw, non-integrated data provide an irreducible set of information. A dramatic illustration of this point is obtained by studying a thin biological sample, such as a small strip cut from the dried skin of a slice of grapefruit. As the SEM image reveals (Figure 4c), its structure consists



**Figure 4** SEM side-view images of the analyzed samples. (a) Heterogeneously disordered sample. The central inset shows a transverse section, which exhibits a layered symmetric structure that we modeled with a high-density central layer ( $L_1=26\ \mu\text{m}$ ), a low-density interstitial layer ( $L_2=60\ \mu\text{m}$ ) and an intermediate-density outer layer ( $L_3=22\ \mu\text{m}$ ). The heterogeneity represented by the core layer is also appreciable at the optical microscope (left inset). The right insets highlight the density difference between regions 1 and 2. (b) A transverse section of the homogeneously disordered reference sample. Despite showing signatures of scatterer clustering, small-scale clusters/heterogeneities are homogeneously dispersed across the sample thickness and do not exhibit any layered arrangement. As confirmed by the excellent agreement obtained with a single parameter Monte Carlo simulation and other work on similar samples<sup>50</sup>, light perceives an effective, homogeneous scatterer density in contrast to the previous tightly layered sample. (c) Lateral section of the dried skin of the grapefruit slice.



**Figure 5** Grapefruit skin data analysis. (a) The time shift induced by the sample in the probe path (black circles vs. black squares). Knowing its thickness from previous scanning electron microscopy images, the effective refractive index is found as  $n=1+c\Delta t/L\approx 1.31$ . The inset shows the actual appearance of the investigated specimens. (b) The frame set, each of which is averaged over a small portion of the sample. The transmitted intensity distribution shows a quasi-ballistic elliptic wavefront traveling at slightly different speeds (see Supplementary Information). (c) Horizontal cross-cuts of the wavefront and a Monte Carlo fit with  $g$  and  $l_s$  as free parameters. The fit returns values of  $g=0.7$  and  $l_s=150\ \mu\text{m}$ . (d) Simulated radial intensity profiles in this extremely optically thin regime show a significant breakdown of the similarity relation.

of a conglomerate of small flakes forming a corrugated slab  $\sim 85\ \mu\text{m}$  thick. The dried sample appears to be a brittle, almost transparent membrane (Figure 5a, inset).

In this range of optical (and absolute) thicknesses, standard experimental techniques fall short because of the extreme time scales

involved, causing common diffusive modeling to fail dramatically. Furthermore, most of the signal will be ballistically transmitted, carrying almost no information concerning the optical properties of the sample. As Figure 5a shows, the light that is scattered inside the grapefruit membrane is  $<1/50$ th of the original intensity. Our

ultrafast imaging technique allows us to selectively address the light that was retained for a longer time inside the sample whereas at the same time spatially inspecting it as it propagates along the main (transverse) slab extension. Figure 5b shows a collection of frames acquired over a time-window of  $\sim 5$  ps after pulse injection, corresponding to a total path length greater than 13 times the sample thickness. We see that the light spreads through the membrane with a well-defined wavefront traveling inside its main plane, resulting in a dramatic departure from any prediction compatible with the diffusive framework. However, standard time-resolved or steady state investigations would still just measure a single decay time and a bell-shaped profile, respectively, which could deceptively support an inappropriate interpretation in terms of the DA.

As we will show, our ultrafast time- and space-resolved experiment provides a deep insight into the light transport properties of complex systems, which requires the development of a novel analysis methodology. We demonstrate a proof-of-concept procedure to assess in-plane transport properties in this extremely optically thin regime. For the sake of simplicity, we will illustrate our investigation on a cross-cut of the profile assuming isotropic transport. The general treatment is analogous and will be the subject of future work. Figure 5c shows a comparison between experimental cross-cuts at different times and the corresponding time evolution of an isotropic Monte Carlo simulation that succeeds in reproducing the wavefront speed, intensity decay and overall shape at all given times. To achieve this collective agreement, the anisotropic scattering coefficient,  $g$ , needs to be considered as an additional parameter to express the degree of directional correlation between consecutive scattering events. As mentioned, diffusion theory is degenerate in  $g$  as long as the transport mean free path  $l_t$  is kept constant, as expressed by the similarity relation,  $l_t = l_s / (1 - g)$ . This is why retrieving any information concerning the angular scattering function is particularly challenging, and one must therefore resort to a regime where the DA ceases to hold<sup>43</sup>. Indeed, as shown by Figure 5d, the observed transverse intensity patterns exhibit a significant breakdown in this degeneracy condition in thin slabs, with  $g$  playing a substantial role in determining the shape and evolution of the traveling wavefront, even when  $l_t$  is constant. In particular, while the outer wavefront propagates almost ballistically (see Supplementary Information), its instantaneous position and peak intensity vary appreciably with different combinations of  $g$  and  $l_s$ , therefore allowing both to be retrieved with an estimated precision of  $\sim 10\%$ . The set of simulated curves shown in Figure 5c is obtained for  $g = 0.7$  and  $l_s = 150 \mu\text{m}$  (corresponding to an in-plane  $l_t = 500 \mu\text{m}$ ). However, quantitatively accurate figures for this particular specimen would require an analysis involving fully anisotropic simulations.

The main purpose of this experiment is to showcase the vast possibilities opened by rich time- and space-resolved outputs. Our  $g$  estimation results from a collective fitting routine involving multiple spatio-temporal datasets and stands in contrast to common and less robust  $g$  determination techniques involving a single scalar, such as the attenuation coefficient of a collimated beam<sup>52,53</sup>. Accurate determination of single scattering anisotropy is crucial to directly probe the shape, orientation and optical properties of single microscopic scatterers and might therefore be of interest to a broad range of fields, from realistic computer rendering of participating media<sup>54,55</sup> to photo-therapeutic diagnostics of biological tissues<sup>56,57</sup>. Moreover, compared to other available techniques, the determination of  $g$  and  $l_s$  is achieved in a single measurement session, which also simplifies the retrieval procedure. The peculiar doughnut-shaped intensity pattern that enables such a rich characterization of the scattering properties is of course not unique to this particular sample, and we observed it in a

variety of different biological samples of both plant and animal origin, usually differing only by the actual contour shape of the propagating wavefront. This supports the general validity and usefulness of our proof-of-concept evaluation technique in studying extremely complex media, included biological tissues.

## Discussion

As illustrated, our optically gated imaging technique offers several advantages, including higher quantitative fidelity over a large field of view with respect to Fourier plane configurations and sub-ps time resolution compared to other electronically gated imaging solutions. Gaining direct access to such time scales not only enables the study of optical properties in thin or inherently minute specimens (for example, ocular fundus, vascular walls, skin dermis and dental enamel), but is fundamental to investigate light transport at the mesoscopic level. From a technical viewpoint, the main strength of our setup is its simplicity and lack of complex electronics. The inherently synchronous nature of the pulses renders the entire setup insensitive to timing jitter. Power fluctuation/drifts also do not pose a problem when measuring the mean square width evolution, which also allows us to dynamically adjust the integration time to enhance the signal-to-noise ratio. This flexibility should make it possible to replicate the setup with cheaper and more easy to use hands-off fiber lasers, therefore widening the effective applicability of the technique.

Accessing both transverse and axial transport simultaneously through a full spatio-temporal investigation allows us to correctly evaluate the applicability of the common diffusion framework, which can be subject to appreciable absorption overestimation in samples presenting a limited optical thickness or large-scale heterogeneities. An accurate retrieval of the absorption coefficient is particularly relevant in many biomedical applications where its value is directly linked to quantities such as chromophores concentration or blood oxygenation levels. The observed discrepancy, which would be not apparent with state-of-the-art spatial or temporal measurements, is revealed by comparing standard time-resolved transmitted intensity decay to the evolution of the mean square width, both of which can be acquired simultaneously. Nevertheless, the most relevant advantage offered by direct access to the transient mean square width expansion is that it enables a robust and simple interpretation. In sharp contrast to other common observables, such as the total transmittance and its decay time, the mean square width is independent of absorption and largely unaffected by refractive index contrasts and sample thickness, therefore overcoming long-standing problems posed by their precise assessment. One prominent case where this feature could be decisive is that of the experimentally observed decrease in the diffusive coefficient of a turbid slab with decreasing thickness<sup>58</sup>, which was indirectly determined through the transmittance decay time. A spatio-temporal measurement in terms of the mean square width evolution would allow us to directly probe the diffusion coefficient irrespective of the exact boundary conditions, the incorrect estimation of which has been cited as a possible cause for this apparently anomalous behavior<sup>32</sup>.

A different scenario emerges when studying samples with extremely low optical thickness, which revealed a peculiar transport regime where  $l_s$  and  $g$ , rather than  $l_t$ , are the meaningful parameters determining how radiative energy spreads through the sample. This finding illustrates a further practical situation where light transport must be studied as a spatio-temporal phenomenon in its entirety. This point has not yet been properly considered when studying transport in thin samples. Moreover, we have demonstrated how this transport regime enables accurate retrieval of otherwise barely accessible



transport parameters, especially for this class of samples where well-established experimental techniques are still missing.

In general, several applications will be facilitated by the three-dimensional characterization capabilities of the setup (see also Supplementary Information), opening new possibilities to properly investigate structurally anisotropic media that are of paramount relevance in many industrial and biomedical applications, and whose correct theoretical modeling in terms of light transport is still an object of lively debate in the literature<sup>59,60</sup>. Other relevant open questions that might be tackled directly with a spatio-temporal investigation include experimental verification of the polarization dependence predicted for the diffusion coefficient<sup>61</sup>, as well as the occurrence of non-monotonic mean square width evolution in samples exhibiting Anderson localization<sup>45</sup> or the lateral expansion of Lévy type transport, where the experimental limit posed by the finite thickness of the sample might be circumvented<sup>62</sup>. Similarly, an UFI measurement of intensity profiles reflected by macro-porous bulk materials could access light spreading within the first few hundred femtoseconds from which the time-dependent diffusion constant could be determined<sup>63</sup> leading to information concerning the structure factor of the material, which would not be obtainable at long times.

## CONCLUSIONS

The field of light transport in complex or structured media still presents a multitude of experimental challenges that could significantly benefit from the advent of novel multi-domain investigation techniques. In this study, we demonstrated an experimental technique to go beyond the ps resolution barrier for spatial investigations of transient intensity profiles emerging from arbitrary samples. Gaining access to this time scale with a broad field of view is key to the characterization of a large class of samples, ranging from thin biological membranes to complex optical microdevices. As we demonstrated, spatio-temporal investigations enable the study of heterogeneous or semi-transparent media that are difficult to characterize with present state-of-the-art techniques. Further, when dealing with more standard samples, combined access to both transverse and axial transport helps reveal the presence of flaws or artifacts in the common diffusion-based data evaluation framework. Remarkably, in many practical situations, we found that low optical thickness can be exploited as an advantage rather than a drawback, therefore offering a complementary framework to study the broad class of samples that do not meet the validity conditions required by the DA. Nonetheless, the setup that we propose is generally applicable and non-invasive, usable at different wavelengths, with a broad field of view and high-time resolution. We therefore envision that it could be applied to a wide range of photonic applications for both the sub-ps physics it allows to investigate and its convenient wide-field acquisition, which does not require scanning over the region of interest.

## ACKNOWLEDGEMENTS

Authors wish to thank G Mazzamuto, F Utel and J Bertolotti for technical assistance and T Svensson, E Alerstam, S Gigan and P Wasylczyk for fruitful discussions. This work is financially supported by the European Network of Excellence Nanophotonics for Energy Efficiency and the ERC through the Advanced Grant PhotBots (Proj. Ref. 291349).

## AUTHOR CONTRIBUTIONS

MB, LP and RS conceived and carried out the time-resolved experiments. LP and RS manufactured the samples and LP ran the simulations. All authors discussed the results and contributed to the writing of the paper.

- Drexler W, Morgner U, Ghanta RK, Kärtner FX, Schuman JS et al. Ultra high-resolution ophthalmic optical coherence tomography. *Nat Med* 2001; **7**: 502–507.
- Obrig H, Villringer A. Beyond the visible-imaging the human brain with light. *J Cereb Blood Flow Metab* 2003; **23**: 1–18.
- Dunsby C, French PMW. Techniques for depth-resolved imaging through turbid media including coherence-gated imaging. *J Phys D: Appl Phys* 2003; **36**: R207.
- Engelen RJP, Sugimoto Y, Gersen H, Ikeda N, Asakawa K et al. Ultrafast evolution of photonic eigenstates in k-space. *Nat Phys* 2007; **3**: 401–405.
- Minardi S, Eilenberger F, Kartashov YV, Szameit A, Röpke U et al. Three-dimensional light bullets in arrays of waveguides. *Phys Rev Lett* 2010; **105**: 263901.
- Bassi A, Brida D, D'Andrea C, Valentini G, Cubeddu R et al. Time-gated optical projection tomography. *Opt Lett* 2010; **35**: 2732–2734.
- Velten A, Willwacher T, Gupta O, Veeraraghavan A, Bawendi MG et al. Recovering three-dimensional shape around a corner using ultrafast time-of-flight imaging. *Nat Commun* 2012; **3**: 745.
- EGgebrecht AT, Ferradal SL, Robichaux-Viehoever A, Hassanpour MS, Dehghani H et al. Mapping distributed brain function and networks with diffuse optical tomography. *Nat Photon* 2014; **8**: 448–454.
- Gao L, Liang JY, Li CY, Wang LV. Single-shot compressed ultrafast photography at one hundred billion frames per second. *Nature* 2014; **516**: 74–77.
- Nakagawa K, Iwasaki A, Oishi Y, Horisaki R, Tsukamoto A et al. Sequentially timed all-optical mapping photography (STAMP). *Nat Photon* 2014; **8**: 695–700.
- Li ZY, Zgadzaj R, Wang XM, Chang YY, Downer MC. Single-shot tomographic movies of evolving light-velocity objects. *Nat Commun* 2014; **5**: 3085.
- Gundlach L, Piotrowiak P. Femtosecond Kerr-gated wide-field fluorescence microscopy. *Opt Lett* 2008; **33**: 992–994.
- Sperling T, Bührer W, Aegerter CM, Maret G. Direct determination of the transition to localization of light in three dimensions. *Nat Photon* 2012; **7**: 48–52.
- Farid N, Hariril S, Ding H, Hassanein A. Dynamics of ultrafast laser plasma expansion in the presence of an ambient. *Appl Phys Lett* 2013; **103**: 191112.
- Grumstrup EM, Gabriel MM, Cating EEM, Van Goethem EM, Papanikolas JM. Pump-probe microscopy: Visualization and spectroscopy of ultrafast dynamics at the nanoscale. *Chem Phys* 2015; **458**: 30–40.
- Shah J. Ultrafast luminescence spectroscopy using sum frequency generation. *IEEE J Quant Electron* 1988; **24**: 276–288.
- Yodh AG, Kaplan PD, Pine DJ. Pulsed diffusing-wave spectroscopy: high resolution through nonlinear optical gating. *Phys Rev B* 1990; **42**: 4744–4747.
- Trebino R. *Frequency-Resolved Optical Gating: The Measurement of Ultrashort Laser Pulses*. Berlin: Springer, 2000.
- Savo R, Burrelli M, Svensson T, Vynck K, Wiersma DS. Walk dimension for light in complex disordered media. *Phys Rev A* 2014; **90**: 023839.
- Burrelli M, Cortese L, Pattelli L, Kolle M, Vukusic P et al. Bright-white beetle scales optimise multiple scattering of light. *Sci Rep* 2014; **4**: 6075.
- Potenza MAC, Minardi S, Trull J, Blasi G, Salerno D et al. Three dimensional imaging of short pulses. *Opt Commun* 2004; **229**: 381–390.
- Firester AH. Image upconversion: part III. *J Appl Phys* 1970; **41**: 703–709.
- Chiou W. Geometric optics theory of parametric image upconversion. *J Appl Phys* 1971; **42**: 1985–1993.
- Faris GW, Banks M. Upconverting time gate for imaging through highly scattering media. *Opt Lett* 1994; **19**: 1813–1815.
- Devaux F, Lantz E. Ultrahigh-speed imaging by parametric image amplification. *Opt Commun* 1995; **118**: 25–27.
- Abraham E, Bordenave E, Tsurumachi N, Jonusauskas G, Oberlé J et al. Real-time two-dimensional imaging in scattering media by use of a femtosecond Cr<sup>4+</sup>: forsterite laser. *Opt Lett* 2000; **25**: 929–931.
- Lantz E, Devaux F. Parametric amplification of images: from time gating to noiseless amplification. *IEEE J Select Top Quant Electron* 2008; **14**: 635–647.
- Pedersen C, Karamehmedovic E, Dam JS, Tidemand-Lichtenberg P. Enhanced 2D-image upconversion using solid-state lasers. *Opt Expr* 2009; **17**: 20885–20890.
- Dam JS, Pedersen C, Tidemand-Lichtenberg P. High-resolution two-dimensional image upconversion of incoherent light. *Opt Lett* 2010; **35**: 3796–3798.
- Graaff R, Aarnoudse JG, de Mul FFM, Jentink HW. Similarity relations for anisotropic scattering in absorbing media. *Opt Eng* 1993; **32**: 244–252.
- Van de Hulst HC. *Multiple Light Scattering: Tables, Formulas, and Applications*. Amsterdam: Elsevier; 2012.
- Elaloufi R, Carminati R, Greffet JJ. Time-dependent transport through scattering media: from radiative transfer to diffusion. *J Opt A: Pure Appl Opt* 2002; **4**: S103.
- Xu M, Cai W, Lax M, Alfano RR. Photon migration in turbid media using a cumulant approximation to radiative transfer. *Phys Rev E* 2002; **65**: 066609.
- Garofalakis A, Zacharakis G, Filippidis G, Sanidas E, Tsiptsis D et al. Characterization of the reduced scattering coefficient for optically thin samples: theory and experiments. *J Opt A: Pure Appl Opt* 2004; **6**: 725–735.
- Hammer M, Roggan A, Schweitzer D, Müller G. Optical properties of ocular fundus tissues-an *in vitro* study using the double-integrating-sphere technique and inverse Monte Carlo simulation. *Phys Med Biol* 1995; **40**: 963–978.
- Kienle A, Patterson MS. Determination of the optical properties of turbid media from a single Monte Carlo simulation. *Phys Med Biol* 1996; **41**: 2221–2227.
- Pifferi A, Taroni P, Valentini G, Andersson-Engels S. Real-time method for fitting time-resolved reflectance and transmittance measurements with a Monte Carlo model. *Appl Opt* 1998; **37**: 2774–2780.
- Alerstam E, Andersson-Engels S, Svensson T. White Monte Carlo for time-resolved photon migration. *J Biom Opt* 2008; **13**: 041304.

- 39 Leonetti M, López C. Measurement of transport mean-free path of light in thin systems. *Opt Lett* 2011; **36**: 2824–2826.
- 40 Nilsson AMK, Berg R, Andersson-Engels S. Measurements of the optical properties of tissue in conjunction with photodynamic therapy. *Appl Opt* 1995; **34**: 4609–4619.
- 41 Dam JS, Yavari N, Sørensen S, Andersson-Engels S. Real-time absorption and scattering characterization of slab-shaped turbid samples obtained by a combination of angular and spatially resolved measurements. *Appl Opt* 2005; **44**: 4281–4290.
- 42 Karlsson H, Fredriksson I, Larsson M, Strömberg T. Inverse Monte Carlo for estimation of scattering and absorption in liquid optical phantoms. *Opt Expr* 2012; **20**: 12233–12246.
- 43 Svensson T, Savo R, Alerstam E, Vynck K, Buresi M et al. Exploiting breakdown of the similarity relation for diffuse light transport: simultaneous retrieval of scattering anisotropy and diffusion constant. *Opt Lett* 2013; **38**: 437–439.
- 44 Elaloufi R, Carminati R, Greffet JJ. Diffusive-to-ballistic transition in dynamic light transmission through thin scattering slabs: a radiative transfer approach. *J Opt Soc Am A* 2004; **21**: 1430–1437.
- 45 Cherroret N, Skipetrov SE, Van Tiggelen BA. Transverse confinement of waves in three-dimensional random media. *Phys Rev E* 2010; **82**: 056603.
- 46 Hu HF, Strybulevych A, Page JH, Skipetrov SE, van Tiggelen BA. Localization of ultrasound in a three-dimensional elastic network. *Nat Phys* 2008; **4**: 945–948.
- 47 Alerstam E, Andersson-Engels S, Svensson T. Improved accuracy in time-resolved diffuse reflectance spectroscopy. *Opt Expr* 2008; **16**: 10440–10454.
- 48 Bouchard JP, Veilleux I, Jedidi R, Noiseux I, Fortin M et al. Reference optical phantoms for diffuse optical spectroscopy. Part 1—Error analysis of a time resolved transmittance characterization method. *Opt Expr* 2010; **18**: 11495–11507.
- 49 Tuchin V. *Tissue Optics: Light Scattering Methods and Instruments for Medical Diagnosis*. Bellingham: SPIE Press; 2007.
- 50 Vos WL, Tukker TW, Mosk AP, Lagendijk A, IJzerman WL. Broadband mean free path of diffuse light in polydisperse ensembles of scatterers for white light-emitting diode lighting. *Appl Opt* 2013; **52**: 2602–2609.
- 51 Comelli D, Bassi A, Pifferi A, Taroni P, Torricelli A et al. *In vivo* time-resolved reflectance spectroscopy of the human forehead. *Appl Opt* 2007; **46**: 1717–1725.
- 52 Marchesini R, Bertoni A, Andreola S, Melloni E, Sichirollo A. Extinction and absorption coefficients and scattering phase functions of human tissues *in vitro*. *Appl Opt* 1989; **28**: 2318–2324.
- 53 Pickering JW, Prah SA, Van Wieringen N, Beek JF, Sterenborg HJCM et al. Double-integrating-sphere system for measuring the optical properties of tissue. *Appl Opt* 1993; **32**: 399–410.
- 54 Pauly M, Kollig T, Keller A. *Metropolis Light Transport for Participating Media*. Berlin: Springer, 2000.
- 55 Premoze S, Ashikhmin M, Tessendorf J, Ramamoorthi R, Nayar S. Practical rendering of multiple scattering effects in participating media. In: Jensen HW, Keller A editors. *Proceedings of the Fifteenth Eurographics Conference on Rendering Techniques*. Switzerland: The Eurographics Association, 2004, pp 363–374.
- 56 Nilsson AMK, Stureson C, Liu DL, Andersson-Engels S. Changes in spectral shape of tissue optical properties in conjunction with laser-induced thermotherapy. *Appl Opt* 1998; **37**: 1256–1267.
- 57 Mourant JR, Freyer JP, Hielscher AH, Eick AA, Shen D et al. Mechanisms of light scattering from biological cells relevant to noninvasive optical-tissue diagnostics. *Appl Opt* 1998; **37**: 3586–3593.
- 58 Kop RHJ, de Vries P, Sprik R, Lagendijk A. Observation of anomalous transport of strongly multiple scattered light in thin disordered slabs. *Phys Rev Lett* 1997; **79**: 4369–4372.
- 59 Kienle A. Anisotropic light diffusion: an oxymoron? *Phys Rev Lett* 2007; **98**: 218104.
- 60 Alerstam E. Anisotropic diffusive transport: Connecting microscopic scattering and macroscopic transport properties. *Phys Rev E* 2014; **89**: 063202.
- 61 Vynck K, Pierrat R, Carminati R. Polarization and spatial coherence of electromagnetic waves in uncorrelated disordered media. *Phys Rev A* 2014; **89**: 013842.
- 62 Bertolotti J, Vynck K, Pattelli L, Barthelemy P, Lepri S et al. Engineering disorder in superdiffusive Lévy glasses. *Adv Funct Mater* 2010; **20**: 965–968.
- 63 Svensson T, Vynck K, Adolfsson E, Farina A, Pifferi A et al. Light diffusion in quenched disorder: Role of step correlations. *Phys Rev E* 2014; **89**: 022141.



This work is licensed under a Creative Commons Attribution 4.0 International License. The images or other third party material in this article are included in the article's Creative Commons license, unless indicated otherwise in the credit line; if the material is not included under the Creative Commons license, users will need to obtain permission from the license holder to reproduce the material. To view a copy of this license, visit <http://creativecommons.org/licenses/by/4.0/>

Supplementary Information for this article can be found on the *Light: Science & Applications*' website (<http://www.nature.com/lsa>).