



ISTITUTO NAZIONALE DI RICERCA METROLOGICA Repository Istituzionale

Diffusion of light in structurally anisotropic media with uniaxial symmetry

Original

Diffusion of light in structurally anisotropic media with uniaxial symmetry / Pini, Ernesto; Martelli, Fabrizio; Gatto, Alexander; Schäfer, Henrik; Wiersma, Diederik S.; Pattelli, Lorenzo. - In: PHYSICAL REVIEW RESEARCH. - ISSN 2643-1564. - 6:2(2024). [10.1103/physrevresearch.6.023051]

Availability:

This version is available at: 11696/80779 since: 2024-04-16T21:25:05Z

Publisher:

APS

Published

DOI:10.1103/physrevresearch.6.023051






Terms of use:

This article is made available under terms and conditions as specified in the corresponding bibliographic description in the repository

Publisher copyright

(Article begins on next page)

Diffusion of light in structurally anisotropic media with uniaxial symmetry

Ernesto Pini ^{1,2,*} Fabrizio Martelli ¹ Alexander Gatto ³ Henrik Schäfer ³
Diederik S. Wiersma^{1,2,4} and Lorenzo Pattelli ^{2,4,5,†}

¹*Department of Physics and Astronomy, Università di Firenze, 50019 Sesto Fiorentino, Italy*

²*European Laboratory for Non-linear Spectroscopy (LENS), 50019 Sesto Fiorentino, Italy*

³*Sony Europe B.V., Stuttgart Technology Center, 70327 Stuttgart, Germany*

⁴*Istituto Nazionale di Ricerca Metrologica (INRiM), 10135 Turin, Italy*

⁵*National Research Council – National Institute of Optics (CNR-INO), 50019 Sesto Fiorentino, Italy*



(Received 20 February 2024; accepted 25 March 2024; published 15 April 2024)

Anisotropic light transport is extremely common among scattering materials, yet a comprehensive picture of how macroscopic diffusion is determined by microscopic tensor scattering coefficients is not fully established yet. In this work, we present a theoretical and experimental study of diffusion in structurally anisotropic media with uniaxially symmetric scattering coefficients. Exact analytical relations are derived in the case of index-matched turbid media, unveiling the general relation between microscopic scattering coefficients and the resulting macroscopic diffusion tensor along different directions. Excellent agreement is found against anisotropic Monte Carlo simulations up to high degrees of anisotropy, in contrast with previously proposed approaches. The obtained solutions are used to analyze experimental measurements of anisotropic light transport in polystyrene foam samples under different degrees of uniaxial compression, providing a practical example of their applicability.

DOI: [10.1103/PhysRevResearch.6.023051](https://doi.org/10.1103/PhysRevResearch.6.023051)

I. INTRODUCTION

Anisotropic light transport is a ubiquitous feature of many scattering media, ranging from biological materials such as wood [1], tendons [2–4], teeth [5], skin [6], and bone [7] to several types of plastics [8] and isotropic materials under mechanical deformations [9]. Despite their relevance for many applications, however, the hallmarks of anisotropic light transport are often overlooked or disregarded altogether, due to our incomplete understanding of how they arise from the structural features of a material.

In principle, for large scattering materials in the diffusive regime, a general anisotropic diffusion equation (ADE) can be easily cast by replacing the scalar diffusion coefficient D with a diffusion tensor \mathbf{D} containing the diffusive rates along different directions. In contrast with the isotropic case, however, the exact relation between the anisotropic diffusive coefficients and their corresponding microscopic scattering properties remains unknown, as well as the expression for the effective boundary conditions required to describe diffusion in finite media.

Despite the significance of structurally anisotropic materials and the need for accurate physical models to describe their light transport regime, a surprisingly small number of works exist attempting to address this issue, with inconclusive results. To date, the agreement between solutions to the radiative transfer equation and anisotropic diffusion has been mostly qualitative [10], with large discrepancies between Monte Carlo (MC) simulations and ADE which seemed to imply a fundamental irreducible incompatibility between anisotropic disorder and the core assumptions of diffusion theory [11]. Attempts have been made to reconcile the two approaches, by suggesting a different relationship between scattering cross sections and the components of the diffusion tensor [9], which however did not resolve the discrepancies with numerical Monte Carlo simulations [12]. In 2014, Alerstam showed that the observed deviations were due to the use of oversimplified assumptions on the interdependence of both the diffusion rates and the extrapolated boundary condition on the microscopic scattering coefficients [13], proposing a numerical recipe to compute all relevant transport quantities starting from a single anisotropic trajectory. When using the so-obtained coefficients, excellent agreement was finally recovered between ADE and a general anisotropic Monte Carlo framework, albeit only up to a moderate degree of anisotropy. After this important milestone, only sporadic attempts were made toward the development of an analytical framework to connect microscopic and macroscopic transport parameters, without success [14].

In this work, we lay the foundation for an analytical description of anisotropic diffusion parameters based on microscopic scattering coefficients for materials characterized

*pinie@lens.unifi.it

†l.pattelli@inrim.it

Published by the American Physical Society under the terms of the [Creative Commons Attribution 4.0 International](https://creativecommons.org/licenses/by/4.0/) license. Further distribution of this work must maintain attribution to the author(s) and the published article's title, journal citation, and DOI.

by uniaxial structural anisotropy. Closed-form relationships are derived in the case of index-matched boundaries and no scattering asymmetry, which are found in excellent agreement with anisotropic Monte Carlo simulations up to very high degrees of anisotropy. Results are presented in the context of radiative transport, however, their derivation is general and could be seamlessly applied to other fields such as neutron transport in pebbled bed reactor cores [15] or particles in fluids [16], to name a few.

The paper is organized as follows: A theoretical background to anisotropic transport theory is provided in Sec. II, introducing the parameters of interest and the problem at hand. Section III presents the derivation of analytical solutions in the case of an index-matched medium with a uniaxially symmetric scattering tensor, allowing to evaluate the diffusive tensor elements and the extrapolated length directly from the scattering tensor coefficients. These solutions are validated against an open-source Monte Carlo implementation of anisotropic light transport in Sec. IV, and compared to time-resolved experimental measurements of diffuse reflectance from insulating foam samples under different degrees of controlled mechanical compression in Sec. V. Finally, the results are discussed in Sec. VI.

II. ANISOTROPIC DIFFUSION EQUATION

The three-dimensional time-dependent ADE [15] for a scattering and absorbing medium can be written as

$$\left(\frac{1}{v} \frac{\partial}{\partial t} - \nabla \cdot \mathbf{D} \nabla + \mu_a \right) \Phi(\mathbf{r}, t) = S(\mathbf{r}, t), \quad (1)$$

where $\Phi(\mathbf{r}, t)$ is the fluence rate at a position $\mathbf{r} = (x, y, z)$ and time t , μ_a is the absorption coefficient, $S(\mathbf{r}, t)$ is the source term, $v = c/n$ is the speed of light in the medium, and \mathbf{D} is the anisotropic diffusion tensor

$$\mathbf{D} = \begin{pmatrix} D_x & 0 & 0 \\ 0 & D_y & 0 \\ 0 & 0 & D_z \end{pmatrix}, \quad (2)$$

having units of length.

At the microscopic level, we express the scattering anisotropy via a direction-dependent scattering coefficient $\mu_s(\hat{\mathbf{s}})$, which may exhibit a complex dependence on the unit vector $\hat{\mathbf{s}}$ along the incoming direction of the energy packet before a scattering event. On the other hand, in the following we will assume that the direction dependence of the scattering coefficient can be expressed using three scalar components of a scattering coefficient tensor μ_s ,

$$\mu_s = \begin{pmatrix} \mu_{s,x} & 0 & 0 \\ 0 & \mu_{s,y} & 0 \\ 0 & 0 & \mu_{s,z} \end{pmatrix}, \quad (3)$$

through the relation $\mu_s(\hat{\mathbf{s}}) = \hat{\mathbf{s}} \mu_s \hat{\mathbf{s}}^T$. Similar tensors could be defined for the refractive index n or the single-scattering asymmetry factor g . In fact, direction-dependent refractive index or scattering asymmetry may often be associated with the presence of structural anisotropy in tissues and fibrous materials. All these tensors can be considered diagonal (allowing us to use a single subscript index for each component,

for brevity), provided that a suitable set of absolute anisotropy axes can be defined in the laboratory reference frame, which in our case we will consider to be aligned with the Cartesian axes. It is worth noting that even in this simplified scenario where each parameter can be defined by just three scalar components, the number of free parameters may still grow too large compared to the available experimental observables, making their full retrieval impractical.

In this work, for the sake of simplicity, we will assume that the transport anisotropy can be condensed in the elements of the scattering coefficient tensor alone, assuming both n and g as direction-independent scalars, and further taking $g = 0$ to focus on the role of the scattering coefficient alone in shaping the anisotropic transport behavior.

In analogy to the isotropic case, the scattering mean free paths ℓ_i and transport mean free paths ℓ_i^* along $i = \{x, y, z\}$ will be indicated as

$$\mu_{s,i} = \frac{1}{\ell_i}, \quad D_i = \frac{1}{3} \ell_i^*, \quad (4)$$

where it should be stressed that, despite setting $g = 0$, in general $\ell_i \neq \ell_i^*$ due to the presence of scattering anisotropy. As a matter of fact, in contrast to the isotropic case, no separable “similarity relation” is expected to hold between the scattering and transport mean free paths, which will be mutually connected via a new adimensional anisotropy tensor \mathbf{K}

$$\mathbf{K} = \begin{pmatrix} K_x & 0 & 0 \\ 0 & K_y & 0 \\ 0 & 0 & K_z \end{pmatrix}, \quad (5)$$

with elements defined via the relation

$$\ell_i^* = K_i \ell_i. \quad (6)$$

In other words, the tensor \mathbf{K} represents the transformation connecting the microscopic scattering properties to the macroscopic diffusion rates:

$$\mathbf{D} = \frac{1}{3} \mathbf{K} \mu_s^{-1}. \quad (7)$$

In the isotropic case, \mathbf{K} becomes the 3×3 identity matrix.

The diagonal elements of the diffusion tensor are the coefficients appearing in the anisotropic diffusion equation. In this context, a commonly studied configuration is that of an infinitely extended slab with thickness L illuminated by a pencil beam pulse along the perpendicular z axis. In the diffusive regime, a pencil beam source can be more conveniently modeled as an isotropic point source placed at the depth $z_0 = \ell_z$ from the surface $S(\mathbf{r}, t) = \delta(x)\delta(y)\delta(z - z_0)\delta(t)$ (note that in the anisotropic case $z_0 = \ell_z \neq \ell_z^*$, even when assuming $g = 0$). The solution of the time-dependent ADE can be written as

$$\begin{aligned} \Phi(\mathbf{r}, t) = & \frac{v \exp(-\mu_a vt) \exp\left(-\frac{x^2}{4D_x vt}\right) \exp\left(-\frac{y^2}{4D_y vt}\right)}{(4\pi vt)^{3/2} \sqrt{D_x D_y D_z}} \\ & \times \left[\sum_{m=-\infty}^{+\infty} \exp\left(-\frac{(z - z_{+,m})^2}{4D_z vt}\right) \right. \\ & \left. - \exp\left(-\frac{(z - z_{-,m})^2}{4D_z vt}\right) \right], \end{aligned} \quad (8)$$

with

$$\begin{aligned} z_{+,m} &= 2m(L + 2z_e) + z_0, \\ z_{-,m} &= 2m(L + 2z_e) - 2z_e - z_0, \end{aligned}$$

and z_e as the extrapolated length. In order to solve the ADE as a function of the microscopic scattering coefficient elements μ_i , closed-form expressions for the diffusive rates D_i and extrapolated boundary length z_e must therefore be derived.

III. ANALYTICAL SOLUTIONS FOR UNIAXIALLY SYMMETRIC ANISOTROPY

A theoretical framework for the definition of a generalized relationship between scattering coefficients and diffusion rates has been proposed recently, covering both nonclassical propagation regimes and angle-dependent step length distributions [15]. This approach provides integral expressions which can be used to describe anisotropic transport [17], even though explicit solutions to these expressions have not been reported nor validated against Monte Carlo simulations. In the following, we present analytical solutions which are derived in the simplified case of media with a uniaxially symmetric scattering coefficient tensor, with isotropic phase function ($g = 0$) and index-matched boundary conditions with the environment. Under these conditions, simple closed-form expressions can be derived, which shed light on the analytical interdependence between microscopic and macroscopic (i.e., experimentally measurable) quantities.

Without loss of generality, let us define z and ϕ as the anisotropy symmetry axis and the angle of rotation around it, respectively. Consequently, we make a distinction between longitudinal (parallel to the symmetry axis) and azimuthal (perpendicular to the symmetry axis) parameters, renaming $\mu_{s,z} = \mu_{s,\parallel}$, $\mu_{s,x} = \mu_{s,y} = \mu_{s,\perp}$, and $D_z = D_{\parallel}$, $D_x = D_y =$

D_{\perp} . Given a generic unit vector associated with the walker direction of propagation $\hat{s} = (\sin \theta \cos \phi, \sin \theta \sin \phi, \cos \theta)$, with θ and ϕ as the polar and azimuthal angles in the absolute (laboratory) reference frame, we find as expected that the direction-dependent scattering coefficient $\mu_s(\hat{s})$ is independent of the azimuthal angle ϕ :

$$\begin{aligned} \mu_s(\theta) &= \mu_{s,\perp} \sin^2 \theta + \mu_{s,\parallel} \cos^2 \theta \\ &= \mu_{s,\perp} (1 - \chi^2) + \mu_{s,\parallel} \chi^2 = \mu_s(\chi), \end{aligned} \quad (9)$$

where $\chi = \cos \theta$.

A first quantity of interest that can be derived is the expectation value of the mean free path $\langle \ell \rangle$

$$\langle \ell \rangle = \int_{4\pi} \xi(\hat{s}) \ell(\hat{s}) d\hat{s}, \quad (10)$$

where $\xi(\hat{s})$ represents the probability that a walker travels within a solid angle $d\hat{s}$ about \hat{s} after a scattering event, and $\ell(\hat{s}) = 1/\mu_s(\chi)$ is the direction-dependent scattering mean free path along the same direction [17]. For an isotropic phase function, we get that $\xi(\hat{s}) = 1/4\pi$, so that the only source of anisotropy is given by $\ell(\hat{s})$ and the integral can be simplified to

$$\langle \ell \rangle = \frac{1}{2} \int_{-1}^1 \frac{1}{\mu_s(\chi)} d\chi = \frac{\tanh^{-1} \sqrt{\frac{\mu_{s,\perp} - \mu_{s,\parallel}}{\mu_{s,\perp}}}}{\sqrt{\mu_{s,\perp}} \sqrt{\mu_{s,\perp} - \mu_{s,\parallel}}}. \quad (11)$$

On the other hand, the diffusion coefficients can be expressed as

$$D_{\perp} = \frac{1}{4\langle \ell \rangle} \int_{-1}^1 \frac{1 - \chi^2}{\mu_s^2(\chi)} d\chi, \quad (12)$$

$$D_{\parallel} = \frac{1}{2\langle \ell \rangle} \int_{-1}^1 \frac{\chi^2}{\mu_s^2(\chi)} d\chi, \quad (13)$$

which also admit closed-form solutions:

$$D_{\perp} = \frac{1}{4} \left(\frac{2\mu_{s,\perp} - \mu_{s,\parallel}}{\mu_{s,\perp}^2 - \mu_{s,\perp}\mu_{s,\parallel}} - \frac{1}{\sqrt{\mu_{s,\perp}} \sqrt{\mu_{s,\perp} - \mu_{s,\parallel}} \tanh^{-1} \sqrt{\frac{\mu_{s,\perp} - \mu_{s,\parallel}}{\mu_{s,\perp}}}} \right), \quad (14)$$

$$D_{\parallel} = \frac{1}{2} \left(\frac{1}{\mu_{s,\parallel} - \mu_{s,\perp}} + \frac{\sqrt{\mu_{s,\perp}}}{\mu_{s,\parallel} \sqrt{\mu_{s,\perp} - \mu_{s,\parallel}} \tanh^{-1} \sqrt{\frac{\mu_{s,\perp} - \mu_{s,\parallel}}{\mu_{s,\perp}}}} \right). \quad (15)$$

From these analytical equations, it is evident that the macroscopic diffusion rate along a certain direction D_i does not depend only on the scattering rates relative to the same direction $\mu_{s,i}$. Based on Eqs. (7) and (11), the coefficients can be rewritten in terms of the scattering mean free paths and the corresponding anisotropy tensor elements:

$$D_{\perp} = \frac{\ell_{\perp}}{4} \left[1 - \frac{\ell_{\parallel}(\langle \ell \rangle - \ell_{\perp})}{\langle \ell \rangle(\ell_{\perp} - \ell_{\parallel})} \right] = \frac{K_{\perp} \ell_{\perp}}{3}, \quad (16)$$

$$D_{\parallel} = \frac{\ell_{\parallel}}{2} \left[\frac{\ell_{\perp}(\langle \ell \rangle - \ell_{\parallel})}{\langle \ell \rangle(\ell_{\perp} - \ell_{\parallel})} \right] = \frac{K_{\parallel} \ell_{\parallel}}{3}, \quad (17)$$

with

$$K_{\perp} = \frac{3}{4} \left[1 - \frac{\ell_{\parallel}(\langle \ell \rangle - \ell_{\perp})}{\langle \ell \rangle(\ell_{\perp} - \ell_{\parallel})} \right], \quad (18)$$

$$K_{\parallel} = \frac{3}{2} \left[\frac{\ell_{\perp}(\langle \ell \rangle - \ell_{\parallel})}{\langle \ell \rangle(\ell_{\perp} - \ell_{\parallel})} \right]. \quad (19)$$

Notably, these equations reveal a conservation property for the trace of the anisotropy tensor:

$$\text{Tr}(\mathbf{K}) = K_{\perp} + K_{\perp} + K_{\parallel} = 3, \quad (20)$$

which holds independently of the degree of anisotropy between the longitudinal and perpendicular directions, and is verified to hold numerically also for full three-dimensional (3D) anisotropy (i.e., when $\mu_{s,x} \neq \mu_{s,y} \neq \mu_{s,z}$) [18].

The analytical solution for the extrapolated length z_e is derived based on a general approach which accommodates for an anisotropic radiance [13]. Taking advantage of the absence of reflections at boundaries for an index-matched scattering medium, the only contributions determining the extrapolated length are given by the integrals $z_e = C/B$ [13]:

$$B = \int_0^{\pi/2} d\theta \int_0^{2\pi} d\phi P(\hat{s}) \sin \theta \cos \theta, \quad (21)$$

$$C = \int_0^{\pi/2} d\theta \int_0^{2\pi} d\phi P(\hat{s}) \sin \theta \cos^2 \theta \ell(\hat{s}), \quad (22)$$

where $P(\hat{s})$ describes the angular distribution of the radiance, i.e., the probability density function that a random walker is traveling along a direction \hat{s} after many scattering events. In the general case, $P(\hat{s})$ depends both on the scattering rate tensor and the asymmetry factor g . In our case, we consider $g = 0$ so that $P(\hat{s}) = \ell(\hat{s})/\langle \ell \rangle$, which further simplifies for uniaxial symmetry to $P(\chi) = 1/\mu_s(\chi)\langle \ell \rangle$. We note that our Eq. (22) deviates slightly from that reported by Alerstam due to its dependence on $\ell(\hat{s})$ rather than $\ell^*(\hat{s})$ [13]. This change is motivated by the fact that we do not expect a simple similarity relation to hold in the case of anisotropic light transport. Moreover, irrespective of the value of the scattering asymmetry (which we have assumed here to be $g = 0$), a general expression for the extrapolated length should depend on the microscopic scattering parameters rather than on the transport mean free path which, in the context of anisotropic propagation, is instead a direct expression of the macroscopic diffusion rates. A validation of this correction against Monte Carlo simulations is discussed in Sec. IV B.

The previous integrals simplify to

$$B = \frac{2\pi v}{\langle \ell \rangle} \int_0^1 \frac{\chi}{\mu_s(\chi)} d\chi, \quad (23)$$

$$C = \frac{2\pi v}{\langle \ell \rangle} \int_0^1 \frac{\chi^2}{\mu_s^2(\chi)} d\chi, \quad (24)$$

to give an analytical expression for z_e ,

$$z_e = \frac{C}{B} = \frac{\frac{1}{\mu_{s,\parallel}} - \frac{\tanh^{-1} \sqrt{(\mu_{s,\perp} - \mu_{s,\parallel})/\mu_{s,\perp}}}{\sqrt{\mu_{s,\perp}} \sqrt{\mu_{s,\perp} - \mu_{s,\parallel}}}}{\ln \frac{\mu_{s,\perp}}{\mu_{s,\parallel}}} = \frac{\ell_{\parallel} - \langle \ell \rangle}{\ln \frac{\ell_{\parallel}}{\ell_{\perp}}}. \quad (25)$$

Equations (11), (18), (19), and (25) represent the main theoretical results introduced in this work. As an important consistency check, it can be easily verified that all derived analytical equations converge to the familiar isotropic limit when $\mu_{s,\perp}$ and $\mu_{s,\parallel}$ tend to the same value $\mu_s = 1/\ell$.

IV. MONTE CARLO VALIDATION

We validate our analytic results using the open source Monte Carlo package PYXOPTO [19], which has been modified to handle anisotropic scattering and asymmetry factors. The ADE solution in the time and space domain is also made available as a set of MATLAB functions [18].

A. Transverse intensity spread

Time-resolved reflected and transmitted intensity profiles for a slab illuminated along the z axis can be obtained from the fluence rate in Eq. (8) using Fick's law [17,20] by setting

$$R(x, y, t) = D_z \frac{\partial}{\partial z} \Phi(x, y, z = 0, t), \quad (26)$$

$$T(x, y, t) = -D_z \frac{\partial}{\partial z} \Phi(x, y, z = L, t). \quad (27)$$

$R(x, y, t)$ and $T(x, y, t)$ are bivariate Gaussian distributions:

$$R(x, y, t) = R_0(t) \exp\left(-\frac{x^2}{4D_x vt}\right) \exp\left(-\frac{y^2}{4D_y vt}\right), \quad (28)$$

$$T(x, y, t) = T_0(t) \exp\left(-\frac{x^2}{4D_x vt}\right) \exp\left(-\frac{y^2}{4D_y vt}\right), \quad (29)$$

with mean square displacements (MSD) along x and y

$$w_x^2(t) = 4D_x vt, \quad w_y^2(t) = 4D_y vt \quad (30)$$

and integrated time-domain amplitudes $R_0(t)$ and $T_0(t)$.

Accessing either $R(x, y, t)$ or $T(x, y, t)$ at different times allows to retrieve directly the diffusion rates (or, equivalently, the transport mean free paths ℓ_x^* , ℓ_y^*) along x and y . Moreover, the evolution of $w_x^2(t)$ and $w_y^2(t)$ does not depend on the amplitude of the profile, so that any effect that may modify its overall intensity (such as a homogeneous absorption coefficient) factors out exactly from the MSD.

We performed time- and space-resolved Monte Carlo simulations for an illustrative slab geometry of thickness $L = 1$ mm, setting a uniaxial scattering anisotropy along the y axis ($\mu_{s,x} = \mu_{s,z} = \mu_{s,\perp}$, $\mu_{s,y} = \mu_{s,\parallel}$). We set $\ell_x = \ell_z = 10 \mu\text{m}$, and vary ℓ_y from $10 \mu\text{m}$ to $100 \mu\text{m}$ with $10 \mu\text{m}$ steps. The macroscopic diffusion coefficients are retrieved by performing a linear regression on the growth rate of the MSD after an initial transient. The resulting values of ℓ_x^* and ℓ_y^* are shown in Fig. 1 together with the analytical predictions obtained from Eqs. (14) and (15). The deviation between theory and MC across this parameter range is about 0.8% along the longitudinal axis and 0.2% in the azimuthal plane, which is representative of the approximations of diffusion theory. This discrepancy grows up to a maximum of 1.4% for the largest value of $\ell_y = 100 \mu\text{m}$, corresponding to an extreme anisotropy ratio of $\ell_{\parallel}/\ell_{\perp} = 10$. This is also expected in the context of diffusion theory, since a longer scattering mean free path along one axis will also increase the average scattering mean free path (11), hence reducing the “effective” optical thickness of the slab.

B. Time-resolved and steady-state profiles

Steady-state and total time-domain transmittance can be derived by direct integration of Eq. (27) as

$$T(x, y) = \int_0^{\infty} T(x, y, t) dt, \quad (31)$$

and

$$T(t) = \iint_{-\infty}^{\infty} T(x, y, t) dx dy, \quad (32)$$

with analog expressions for the reflectance.

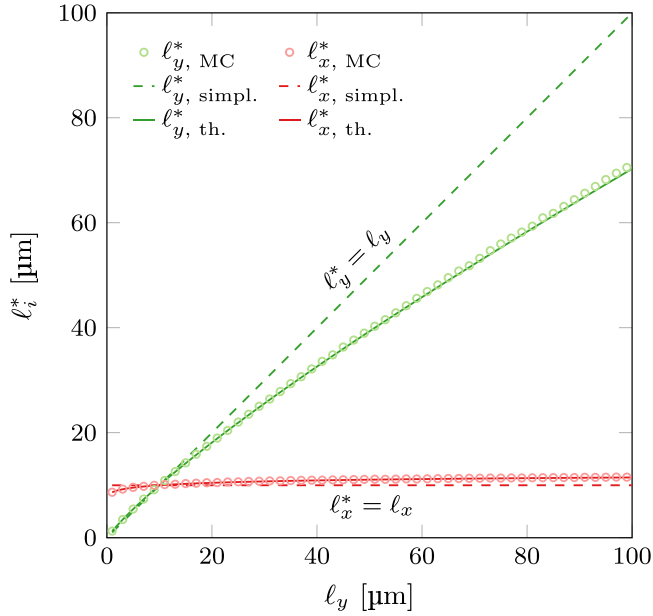


FIG. 1. Mean free paths along x and y obtained with MC simulations and the analytical formulas as a function of ℓ_y . Dashed lines represent the simplistic assumption $\ell_i^* = \ell_i$.

A first validation test regards the definition of the extrapolated length z_e and of the depth z_0 of the isotropic point source required to solve the ADE. In the current literature [13], it is suggested to compute z_e as a function of $\ell^*(\hat{s})$ and to use $z_0 = \ell_z^*$. However, when testing these assumptions against Monte Carlo simulations of anisotropic media with significant transport anisotropy, a much better agreement is obtained instead by defining z_e as a function of $\ell(\hat{s})$ and using $z_0 = \ell_z$ (Fig. 2).

A final set of MC simulations for the time- and space-resolved transmittance $T(x, y, t)$ was performed for slabs with $g = 0$, $n = 1$, $\mu_a = 0$, and different scattering coefficients.

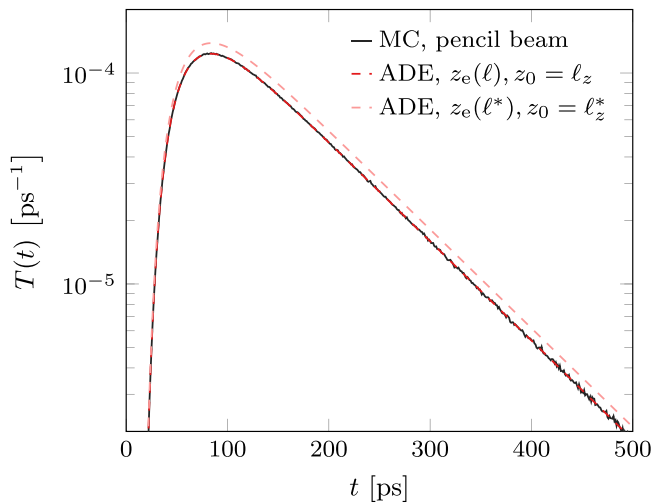


FIG. 2. Total time-resolved transmittance through a 1-mm-thick slab with $\ell_x = 30 \mu\text{m}$ and $\ell_y = \ell_z = 10 \mu\text{m}$. Numerical results for pencil beam illumination are compared to the analytical solutions using different definitions for the extrapolated length z_e and for the equivalent depth z_0 of the isotropic point source.

The results for one representative case are shown in Fig. 3, compared to the analytical predictions. Excellent agreement is found at all times and positions, with average absolute discrepancies below 1 % in the considered spatiotemporal range.

V. EXPERIMENTAL MEASUREMENTS

We finally test anisotropic light transport experimentally in samples of extruded polystyrene (XPS) foam under controlled degrees of uniaxial compression, and use the newly developed ADE to retrieve its microscopic scattering coefficients. Due to its very high porosity, the effective refractive index of this material is close to that of air. Moreover, the absence of a well-defined boundary interface further suppresses the occurrence of internal reflections at boundaries, which conforms well with the assumptions under which our analytical results have been derived.

In pristine conditions, XPS foam is characterized by an isotropic closed-cell microstructure and isotropic scattering properties. Under uniaxial compression, however, the foam cells become increasingly oblate and eventually collapse, introducing different degrees of uniaxial scattering anisotropy [21–23].

We realized different samples with increasing levels of compressive strain (defined as the ratio between the height contraction Δh and the original height h_0), spanning across the elastic-plastic deformation transition of XPS (Fig. 4). Anisotropic light transport was studied by means of an optical gating imaging apparatus allowing to capture the evolution of intensity profiles with sub-picosecond resolution [24,25]. A collection of frames recorded for each sample at a probe wavelength of 820 nm is shown in Fig. 5 for $t \leq 15$ ps. Within this time-limited range, all samples can be effectively considered as semi-infinite.

Due to the uniaxial compression condition, each sample becomes characterized by a pair of azimuthal ($\ell_x = \ell_z$) and longitudinal (ℓ_y) scattering mean free paths. We further assume $g = 0$ and no Fresnel reflections at boundaries, given the large pore sizes of the samples. Nonetheless, an effective refractive index is calculated for each sample based on the increasing solid fraction under compression, ranging from $n = 1.014$ for the uncompressed case (solid fraction 2.8 %) to $n = 1.043$ for the most compressed sample (solid fraction 14 %). These values are used for the correct determination of the energy velocity v inside the sample.

The reflected intensity profiles were fitted at different times with bivariate Gaussian distributions to retrieve their MSD evolution along the y (vertical) and x (horizontal) axes. The resulting diffusive constants D_x , D_y , expressed through their corresponding transport mean free paths, can be then obtained via a linear regression of the MSD growth rates. The microscopic scattering coefficients ℓ_x and ℓ_y along the two anisotropic directions can be finally retrieved using the analytical relations (15) and (14). The results are shown in Fig. 6(a).

As intuitively expected, we find that ℓ_y is progressively reduced with increasing compression. On the other hand, $\ell_x = \ell_z$ remain mostly constant for small degrees of compression, and then start to decrease with increasing compressive strain [Fig. 6(a)]. In the case of real samples with finite thickness, this result suggests that compressing an isotropic scattering

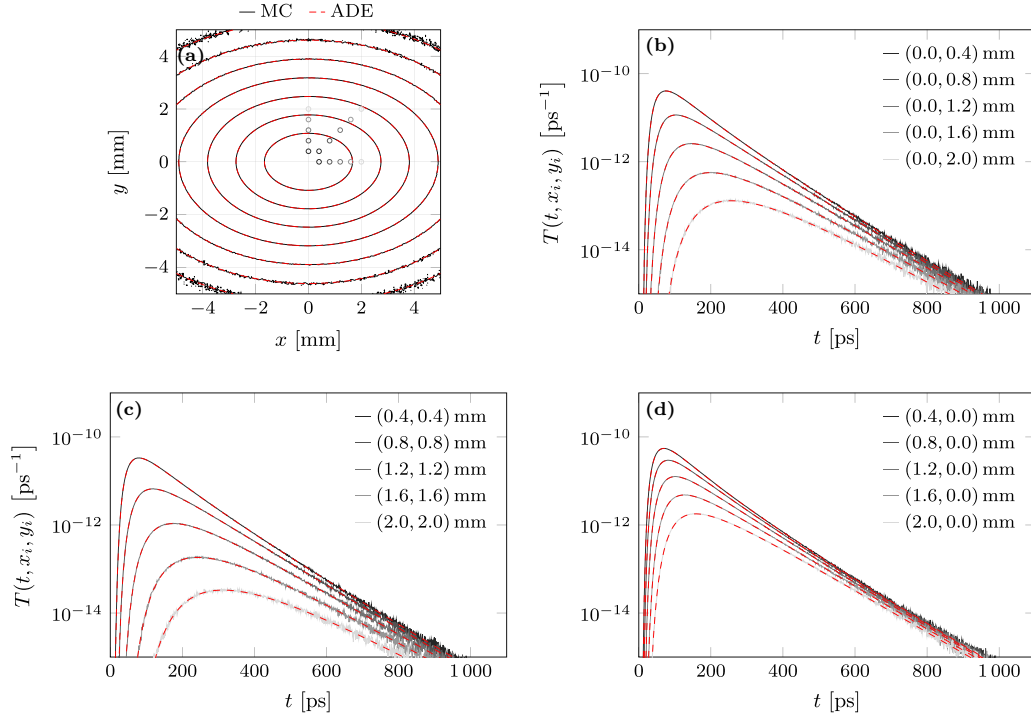


FIG. 3. (a) Steady-state transmittance $T(x, y)$ from a 1-mm-thick slab with $\ell_x = 30 \mu\text{m}$ and $\ell_y = \ell_z = 10 \mu\text{m}$, plotted as log-scale contour lines marking consecutive decades. (b)–(d) Time-resolved transmittance at different locations (x_0, y_0) on the slab's output surface, identified by the markers in (a). The prediction from anisotropic theory (dashed) is compared against the results of a Monte Carlo simulation comprising 10^{13} trajectories (solid).

material along the perpendicular axis to the illumination direction leads to an increase of its total reflectance, which can be intuitively understood by the fact that the density of scatterers per unit area encountered by the beam is also increased correspondingly upon transverse compression. The overall variation of the scattering properties is well captured by the anisotropy tensor elements introduced in Eq. (6),

which exhibit opposite trends as a function of compressive strain. As suggested by the relation $\text{Tr}(\mathbf{K})/3 = 1$, the increase of K_y is compensated by a corresponding decrease of K_x [Fig. 6(b)]. This analysis allows to quantitatively estimate the magnitude of the systematic error introduced when inferring microscopic scattering parameters directly from macroscopic observables in structurally anisotropic media, which may

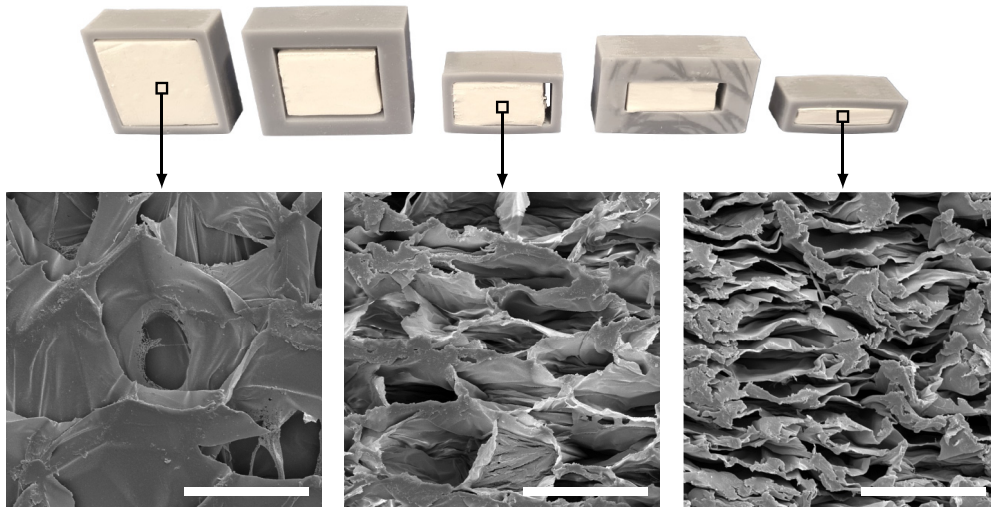


FIG. 4. Experimental XPS samples under different compressive strain. The uncompressed height of each foam sample is $h_0 = 29 \text{ mm}$. A constant level of compression is maintained by placing the samples inside rigid frames. Scanning electron microscopy images of a cross-sectional slice of samples are shown in the bottom row for a few examples with increasing degree of compression. Scale bars correspond to $100 \mu\text{m}$.

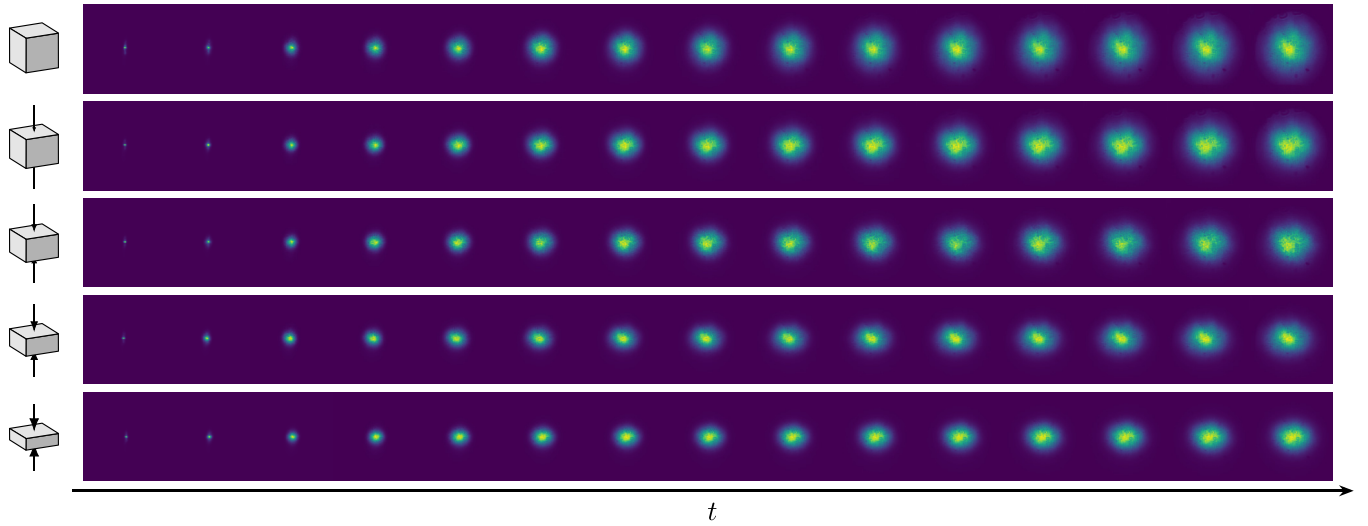


FIG. 5. Time-resolved imaging measurements of the reflected intensity for the five samples of extruded polystyrene. The relative delay between consecutive frames is 1 ps. Each frame covers an area of $5.35 \times 5.35 \text{ mm}^2$ and is normalized to its maximum value.

directly affect several results previously reported in the literature [26–29].

VI. CONCLUSIONS

In this work, we analyzed anisotropic light transport induced by a uniaxial tensor scattering coefficient, and derived analytic expressions for both the diffusion rates and the extrapolated boundary length. In the simple case of isotropic scattering ($g = 0$) and index-matched boundary conditions, the resulting closed-form expression allows to solve directly the anisotropic diffusion equation in both the spatial and temporal domains. The results have been validated against a general anisotropic Monte Carlo implementation, showing excellent agreement up to high degrees of anisotropy between the longitudinal and azimuthal directions.

The availability of an analytic solution to the anisotropic diffusion equation can streamline the analysis of experimental data, which we demonstrate in the case of a scattering medium subject to a controlled degree of anisotropic deformation. Additionally, it provides direct insight into the functional interdependence between the scattering properties

along different axes, which may be extended to more general anisotropic configurations. More importantly, our study revealed the presence of systematic discrepancies between the observed diffusive rates and the corresponding scattering coefficients, calling for a careful reevaluation of previously reported scattering mean free path values of anisotropic media. At the same time, it facilitates the application of a more correct diffusive model in several cases where structural anisotropy is evident and yet disregarded due to the lack of established numerical or theoretical approaches.

The analytical solution that we have presented is applicable only to the specific case of index-matched media with an isotropic phase function. This represents a configuration of prominent relevance, especially considering the fact that in the diffusive regime we do not expect to be able to uniquely determine the (tensor) scattering asymmetry from the diffusive rates. Indeed, experimental studies on anisotropic light transport typically consider only one tensor for the scattering coefficients, making our approach directly applicable to the analysis of a large array of previously reported results. Analogously, index-matched boundary conditions are still relevant

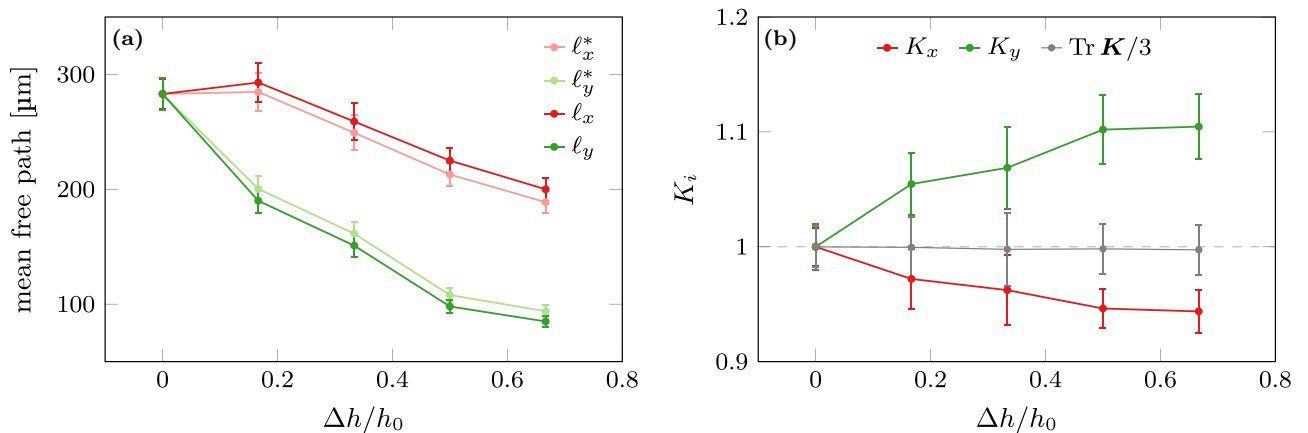


FIG. 6. (a) Mean free path along x , y and (b) anisotropy tensor components as a function of the compressive strain for the five samples of insulation foam.

to a large class of materials that are characterized by suppressed reflection at their interfaces and can exhibit uniaxial anisotropy, such as foams or aerogels which are permeated by their host medium, but also biological tissues which are immersed in an aqueous environment, decreasing their index contrast with the surrounding media.

For more general anisotropic media, with different scattering and asymmetry coefficients along each axis, we anticipate that closed-form expressions may very likely be impractical to use or not exist altogether. However, even in this case, our results confirm the validity of the adopted theoretical framework for the calculation of the relevant transport parameters, which may still be solved numerically for more complex configurations at a fraction of the computational cost required to run a full anisotropic Monte Carlo simulation, driving the further development of new solutions for the accurate description of direction-dependent diffusion processes.

ACKNOWLEDGMENTS

This work was partially funded by the European Union's NextGenerationEU Programme with the I-PHOQS Research Infrastructure [IR0000016, ID D2B8D520, CUP B53C22001750006] "Integrated infrastructure initiative in Photonic and Quantum Sciences." E.P acknowledges financial support from Sony Europe B.V. L.P. further acknowledges the CINECA award under the ISCRA initiative, for the availability of high-performance computing resources and support (ISCRA-C "ARTTESC"), and the NVIDIA Corporation for the donation of the Titan X Pascal GPU. F.M. acknowledges financial support by the European Union's NextGenerationEU, National Recovery and Resilience Plan, MNESYS, PE0000006 (DN 572 1553 11.10.2022) and PRIN 2022, DIRS, Grant No. 2022EB4B7E. M. Bürmen and P. Naglič are kindly acknowledged for fruitful discussion.

- [1] A. Kienle, C. D'Andrea, F. Foschum, P. Taroni, and A. Pifferi, Light propagation in dry and wet softwood, *Opt. Express* **16**, 9895 (2008).
- [2] A. Kienle, C. Wetzel, A. Bassi, D. Comelli, P. Taroni, and A. Pifferi, Determination of the optical properties of anisotropic biological media using an isotropic diffusion model, *J. Biomed. Opt.* **12**, 014026 (2007).
- [3] E. Simon, P. Krauter, and A. Kienle, Time-resolved measurements of the optical properties of fibrous media using the anisotropic diffusion equation, *J. Biomed. Opt.* **19**, 075006 (2014).
- [4] A. Kienle, F. K. Forster, and R. Hibst, Anisotropy of light propagation in biological tissue, *Opt. Lett.* **29**, 2617 (2004).
- [5] A. Kienle, F. K. Forster, R. Diebold, and R. Hibst, Light propagation in dentin: influence of microstructure on anisotropy, *Phys. Med. Biol.* **48**, N7 (2003).
- [6] S. Nickell, M. Hermann, M. Essenpreis, T. J. Farrell, U. Krämer, and M. S. Patterson, Anisotropy of light propagation in human skin, *Phys. Med. Biol.* **45**, 2873 (2000).
- [7] A. P. Sviridov, V. V. Chernomordik, M. Hassan, A. Russo, A. B. Eidsath, P. D. Smith, and A. H. Gandjbakhche, Intensity profiles of linearly polarized light backscattered from skin and tissue-like phantoms, *J. Biomed. Opt.* **10**, 014012 (2005).
- [8] P. M. Johnson, S. Faez, and A. Lagendijk, Full characterization of anisotropic diffuse light, *Opt. Express* **16**, 7435 (2008).
- [9] P. M. Johnson and A. Lagendijk, Optical anisotropic diffusion: new model systems and theoretical modeling, *J. Biomed. Opt.* **14**, 054036 (2009).
- [10] J. Heino, S. Arridge, J. Sikora, and E. Somersalo, Anisotropic effects in highly scattering media, *Phys. Rev. E* **68**, 031908 (2003).
- [11] A. Kienle, Anisotropic light diffusion: An oxymoron? *Phys. Rev. Lett.* **98**, 218104 (2007).
- [12] A. Kienle, F. Foschum, and A. Hohmann, Light propagation in structural anisotropic media in the steady-state and time domains, *Phys. Med. Biol.* **58**, 6205 (2013).
- [13] E. Alerstam, Anisotropic diffusive transport: Connecting microscopic scattering and macroscopic transport properties, *Phys. Rev. E* **89**, 063202 (2014).
- [14] S. E. Han, Transport mean free path tensor and anisotropy tensor in anisotropic diffusion equation for optical media, *J. Opt.* **22**, 075606 (2020).
- [15] R. Vasques and E. W. Larsen, Non-classical particle transport with angular-dependent path-length distributions. II: Application to pebble bed reactor cores, *Ann. Nucl. Energy* **70**, 301 (2014).
- [16] T. Tran-Duc, E. Bertevas, N. Phan-Thien, and B. C. Khoo, Simulation of anisotropic diffusion processes in fluids with smoothed particle hydrodynamics, *Int. J. Numer. Methods Fluids* **82**, 730 (2016).
- [17] F. Martelli, T. Binzoni, S. Del Bianco, A. Liemert, and A. Kienle, *Light Propagation Through Biological Tissue and Other Diffusive Media: Theory, Solutions, and Validations* (SPIE, Bellingham, 2022).
- [18] A numerical solution of the analytical ADE integrals for both the uniaxial-symmetric and fully anisotropic cases is available at https://github.com/epini/ADE_MATLAB_func.
- [19] P. Naglič, Y. Zelinsky, F. Pernuš, B. Likar, and M. Bürmen, PyXOpto: An open-source Python library with utilities for fast light propagation modeling in turbid media, in *European Conference on Biomedical Optics* (Optica Publishing Group, Washington, DC, 2021), p. EM3C-2.
- [20] R. C. Haskell, L. O. Svaasand, T.-T. Tsay, T.-C. Feng, M. S. McAdams, and B. J. Tromberg, Boundary conditions for the diffusion equation in radiative transfer, *J. Opt. Soc. Am. A* **11**, 2727 (1994).
- [21] A. Krundaeva, G. De Bruyne, F. Gagliardi, and W. Van Paepegem, Dynamic compressive strength and crushing properties of expanded polystyrene foam for different strain rates and different temperatures, *Polym. Test.* **55**, 61 (2016).
- [22] S. Vaitkus, S. Vėjelis, and A. Kairyte, Analysis of extruded polystyrene short-term compression dependence on exposure time, *Mater. Sci.* **19**, 471 (2013).
- [23] E. Sadek and N. A. Fouad, Finite element modeling of compression behavior of extruded polystyrene foam using X-ray tomography, *J. Cell. Plast.* **49**, 161 (2013).

- [24] L. Pattelli, R. Savo, M. Burresi, and D. S. Wiersma, Spatio-temporal visualization of light transport in complex photonic structures, [Light Sci. Appl.](#) **5**, e16090 (2016).
- [25] E. Pini, G. Mazzamuto, F. Riboli, D. S. Wiersma, and L. Pattelli, Breakdown of self-similarity in light transport, [arXiv:2304.02773](#).
- [26] M. Burresi, L. Cortese, L. Pattelli, M. Kolle, P. Vukusic, D. S. Wiersma, U. Steiner, and S. Vignolini, Bright-white beetle scales optimise multiple scattering of light, [Sci. Rep.](#) **4**, 6075 (2014).
- [27] L. Cortese, L. Pattelli, F. Utel, S. Vignolini, M. Burresi, and D. S. Wiersma, Anisotropic light transport in white beetle scales, [Adv. Opt. Mater.](#) **3**, 1337 (2015).
- [28] F. Utel, L. Cortese, D. S. Wiersma, and L. Pattelli, Optimized white reflectance in photonic-network structures, [Adv. Opt. Mater.](#) **7**, 1900043 (2019).
- [29] B. K. Park, S. M. Han, and S. E. Han, Surpassing *Cyphochilus* scales in optical scattering strength by well-controlled electrospun nanostructures, [Opt. Mater. Express](#) **12**, 2529 (2022).