



ISTITUTO NAZIONALE DI RICERCA METROLOGICA Repository Istituzionale

Mixture distribution modelling of the sensitivities of a digital 3-axis MEMS accelerometers large batch

This is the author's accepted version of the contribution published as:

Original

Mixture distribution modelling of the sensitivities of a digital 3-axis MEMS accelerometers large batch / Prato, A; Pennechi, Fr; Genta, G; Schiavi, A. - (2022), pp. 223-228. (Intervento presentato al convegno 2022 IEEE International Workshop on Metrology for Industry 4.0 and IoT, MetroInd 4.0 and IoT 2022) [10.1109/MetroInd4.0IoT54413.2022.9831583].

Availability:

This version is available at: 11696/74904 since: 2023-05-30T15:19:21Z

Publisher:

IEEE

Published

DOI:10.1109/MetroInd4.0IoT54413.2022.9831583

Terms of use:

This article is made available under terms and conditions as specified in the corresponding bibliographic description in the repository

Publisher copyright

IEEE

© 20XX IEEE. Personal use of this material is permitted. Permission from IEEE must be obtained for all other uses, in any current or future media, including reprinting/republishing this material for advertising or promotional purposes, creating new collective works, for resale or redistribution to servers or lists, or reuse of any copyrighted component of this work in other works

(Article begins on next page)

Mixture distribution modelling of the sensitivities of a digital 3-axis MEMS accelerometers large batch

Andrea Prato
INRiM – National Institute of
Metrological Research
Division of Applied Metrology and
Engineering
Turin, Italy
a.prato@inrim.it

Francesca R. Penneccchi
INRiM – National Institute of
Metrological Research
Division of Applied Metrology and
Engineering
Turin, Italy
f.penneccchi@inrim.it

Gianfranco Genta
Department of Management and
Production Engineering
Politecnico di Torino
Turin, Italy
gianfranco.genta@polito.it

Alessandro Schiavi
INRiM – National Institute of
Metrological Research
Division of Applied Metrology and
Engineering
Turin, Italy
a.schiavi@inrim.it

Abstract—Huge quantities of low-cost analogue or digital MEMS sensors, in the order of millions per week, are produced by manufacturers. Their use is broad, from consumer electronic devices to Industry 4.0, Internet of Things and Smart Cities. In many cases, such sensors have to be calibrated by accredited laboratories to provide traceable measurements. However, at present, such a massive number of sensors cannot be calibrated and large-scale calibration systems and procedures are still missing. A first step to implementing these methods can be based on the distribution of the sensitivities of the large batches produced. Such distribution is also useful for sensor network end-users who need a single sensitivity, with the associated uncertainty, to be attributed to the whole network. Recently, a large batch of 100 digital 3-axis MEMS accelerometers was calibrated with a primary calibration system developed at INRiM and suitable for 3-axis accelerometers. Distributions of their sensitivities as a function of axis and frequency were analyzed and their non-normal behaviour was shown. However, in the preliminary phase of the study, the calibration uncertainties were not considered in these distributions. Therefore, in this paper, a mixture distribution modelling, based on Monte Carlo simulations and aimed at including the calibration uncertainties in the sensitivity distributions, is implemented and the resulting distributions are compared to the previous ones in histogram form. These distributions are also fitted with Johnson's unbounded and bimodal functions to get continuous distributions. This paper represents a further step towards the development of large-scale statistical calibration methods.

Keywords— Digital MEMS accelerometers, large-scale, sensitivity, mixture distribution

I. INTRODUCTION

In recent years, the production of sensors, in particular MEMS ones, exponentially increased, reaching a massive quantity, in the order of millions per week. At present, these sensors are mainly used in electronic consumer device applications, such as accelerometers, pressure, gyroscopes, microphones, humidity and temperature sensors. However, as underlying technical performance improves, the reliability and accuracy of these sensors are becoming comparable to those of traditional measuring instruments, at least within specific boundary conditions or for certain measuring ranges, while maintaining significantly reduced costs. This feature

makes such sensors attractive for measurement applications, such as those rapidly developing in the field of Industry 4.0, Internet of Things (IoT) and Smart Cities, where a large number of traceable sensors is required [1-3]. However, due to the huge amount of produced MEMS, it is not possible to calibrate every single sensor, as currently done in “traditional” metrology. For this reason, it is necessary to define large-scale calibration methods, schemes or procedures. These can be based on suitable statistical sampling approaches or through in-line calibration systems, as also emphasized in the BIPM CCAUV strategy document 2019-2029 [4]. In both cases, it is fundamental to characterize the distribution of the sensitivities of these sensors, produced in large batches, to address a traceability strategy. Such distributions are also useful for sensor network end-users. As a matter of fact, sensor networks consist of tens, hundreds, if not thousands of transducers, thus attributing a sensitivity to each transducer and for each parameter of influence (e.g. frequency and axis, for 3-axis accelerometers) might be difficult to be managed in numerical, computational and consumption terms by end-users in actual applications [5] and a single sensitivity value to be attributed to the whole sensor network, together with an associated expanded uncertainty based on the distribution of the sensitivities, is more preferable.

Recently, a large batch of 100 digital 3-axis MEMS accelerometers was calibrated at INRiM and the individual main and transverse sensitivities were provided for each sensitive axis at frequencies between 5 Hz and 1000 Hz [6,7]. It was found that the distribution of the sensitivities for each frequency and each vibrating axis is significantly non-normal in the considered frequency range. However, in these distributions, the calibration uncertainties were not considered, thus they are not accurate enough for representing the actual variability, essential to implement large-scale methods or to attribute an uncertainty or a variability to a sensor network composed of these sensors.

For this reason, in this paper, a method to include the calibration uncertainties in the sensitivity distributions is implemented. Such method is based on the modelling of a mixture distribution resulting from the normal distributions of the sensitivities of the individual sensors, having a standard deviation equal to their calibration uncertainty. The resulting mixture distributions are compared to the previous simple

ones (raw data without calibration uncertainty). These distributions are also fitted with two different families of probability distributions (Johnson's [8] and a mixture of two normal distributions [9]). Results are shown and compared.

II. THE DIGITAL 3-AXIS MEMS ACCELEROMETERS BATCH

The batch under study is composed of 100 digital 3-axis MEMS accelerometers (Fig. 1).

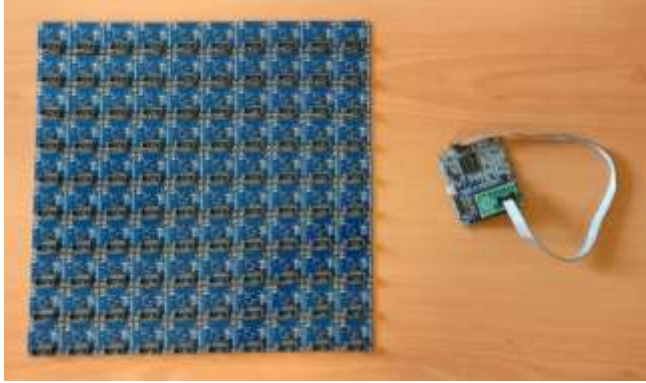


Fig. 1. The 100 digital 3-axis MEMS accelerometers (left) and the external microcontroller (right).

These sensors were calibrated with a specific system suitable for the simultaneous amplitude calibration of digital 3-axis MEMS accelerometers in the frequency domain, by comparison to a reference transducer (in analogy to ISO Standard 16063-21 [10]), traceable to the SI and developed and validated at INRIM [11-16]. Main and transverse sensitivities were provided for each sensitive axis at frequencies of 5 Hz, 10 Hz, 20 Hz, 40 Hz, 80 Hz, 160 Hz, 315 Hz, 630 Hz and 1000 Hz, at nearly-constant peak amplitude of 10 m/s^2 . The outputs of the digital MEMS are given in Decimal_{16-bit-signed} (hereinafter abbreviated as $D_{16\text{-bit-signed}}$) where the digit unit is a signed 16-bit sequence converted into a decimal number. Sensitivities along x - and y -axis range between $615 D_{16\text{-bit-signed}}/(\text{m/s}^2)$ and $1025 D_{16\text{-bit-signed}}/(\text{m/s}^2)$, with relative expanded uncertainties around 1.2% at 5 Hz, and around 0.4% from 10 Hz to 1 kHz, whereas z -axis sensitivities decrease at increasing frequencies and range between $251 D_{16\text{-bit-signed}}/(\text{m/s}^2)$ and $896 D_{16\text{-bit-signed}}/(\text{m/s}^2)$, with relative expanded uncertainties around 0.9% at 5 Hz and 0.3% from 10 Hz to 1 kHz. It was found that the simple distribution of the sensitivities for each frequency and vibrating axis is significantly non-normal in the considered frequency range. An example is shown for z -axis at 5 Hz in Fig. 2.

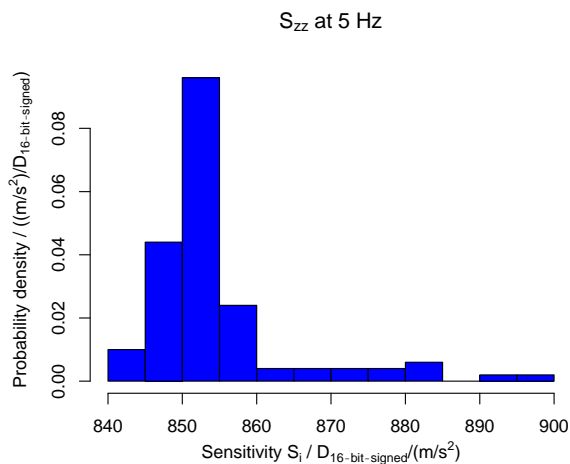


Fig. 2. Simple distribution of the 100 MEMS z -axis sensitivities at 5 Hz.

III. MIXTURE DISTRIBUTION MODELLING

The preliminary investigated histograms refer to the sample distribution of the sensitivity values, S_i , each pertaining to the i^{th} MEMS, without the inclusion of the associated expanded uncertainty $U(S_i)$. As a matter of fact, MEMS sensitivities are more accurately represented by a set of normal distributions, whose dispersions depend on the associated calibration uncertainties $u(S_i)$, as schematically shown in Fig. 3, rather than by a set of single values.

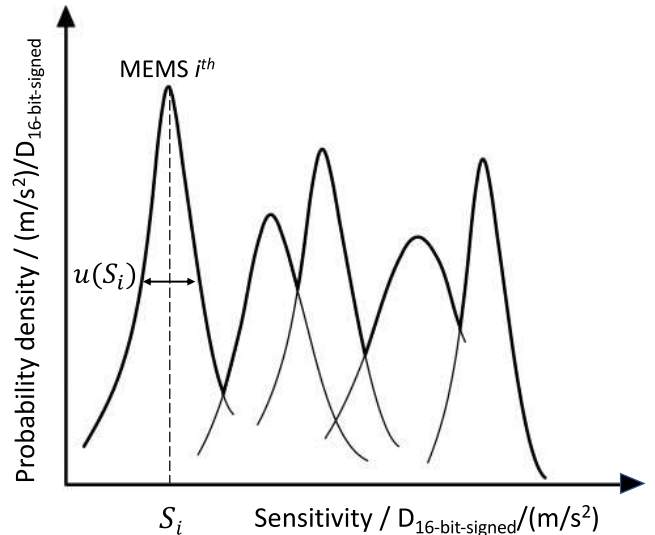


Fig. 3. Schematic representation of the sensitivity of each MEMS, in terms of normal distribution, whose dispersion depends on the associated calibration uncertainty.

To include the calibration uncertainties in the distribution of the sensitivities of the experimental batch, a mixture distribution [17] modelling is implemented. The mixture distribution is obtained from the collection of 100 normally-distributed variables (assigned to the sensitivities of each MEMS in the batch), all having the same weight within the mixture.

The modelling of the mixture distribution is performed through R software by implementing the “rmvnorm” function [18] that generates data from the multivariate normal distributions, given a vector of mean values, i.e. the 100 sensitivities of the MEMS, and a covariance matrix, i.e. a 100×100 matrix where the diagonal terms are represented by the calibration uncertainties of each MEMS, in terms of combined square uncertainty, and the out-of-diagonal terms are represented by the covariance terms. Since each MEMS is calibrated with the same system, whose associated variance weights 50% of the overall combined square uncertainty as shown in [11,19], out-of-diagonal covariance terms are calculated assuming a constant correlation coefficient of 0.50 for all couples of MEMS. This process is numerically performed through a Monte Carlo method: for each of the 100 normal distributions, 10^5 values are extracted and combined into a $10^5 \times 100$ matrix of randomly generated numbers. Each column of this matrix represents the probability density function of the individual MEMS, correlated with each other. Putting all these data together, i.e. mixing the simulated 10^7 sensitivity values, the final mixture distribution of the possible sensitivity values of the whole MEMS batch is obtained. Such operation can be performed for the sensitivities related to a specific axis and a specific frequency, or for larger groupings, e.g. without any distinction between axis or frequency. As an

example, the mixture distributions (with calibration uncertainties) of the main sensitivities along x -, y - and z -axis at 5 Hz are shown and compared to the simple distribution (without calibration uncertainties) in Figs. 4-6. It is worth noting that the dispersion of the mixture distributions is generally higher than that of the simple distributions due to the inclusion of the individual calibration uncertainties. At higher frequencies, calibration uncertainties along the three sensitive axes are lower, thus the impact on the mixture distribution is less noticeable, as shown in Fig. 7 along x -axis for 1000 Hz.

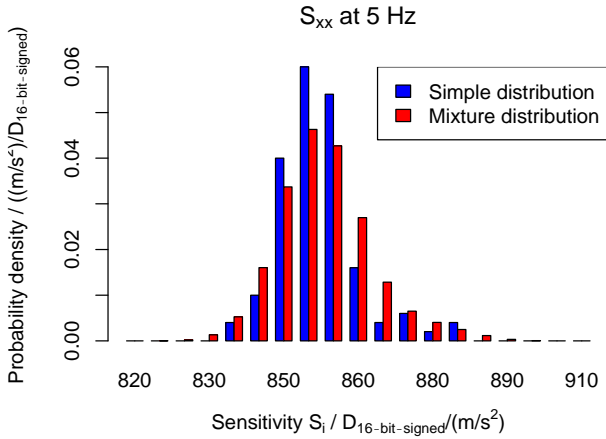


Fig. 4. Mixture and simple distribution of the 100 MEMS x -axis main sensitivities at 5 Hz.

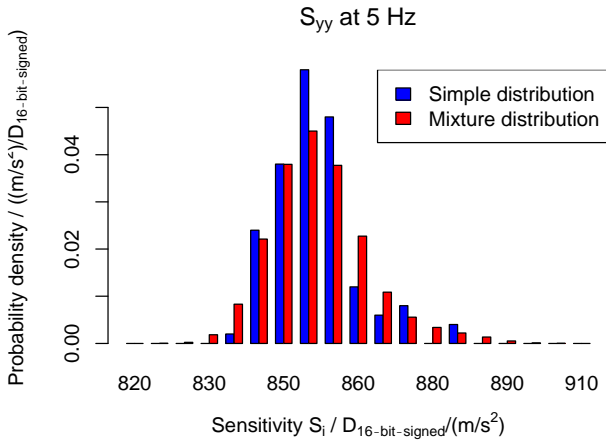


Fig. 5. Mixture and simple distribution of the 100 MEMS y -axis main sensitivities at 5 Hz.

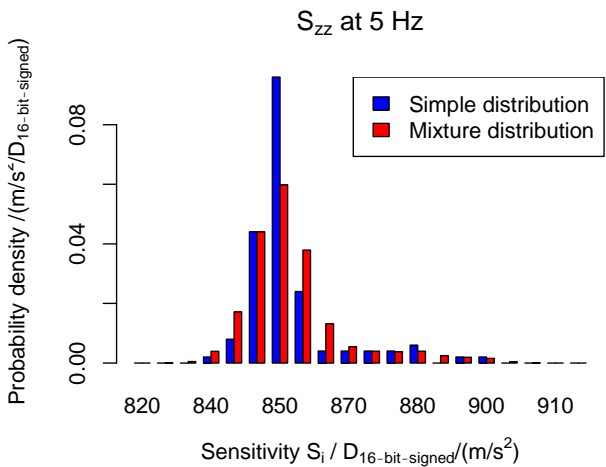


Fig. 6. Mixture and simple distribution of the 100 MEMS z -axis main sensitivities at 5 Hz.

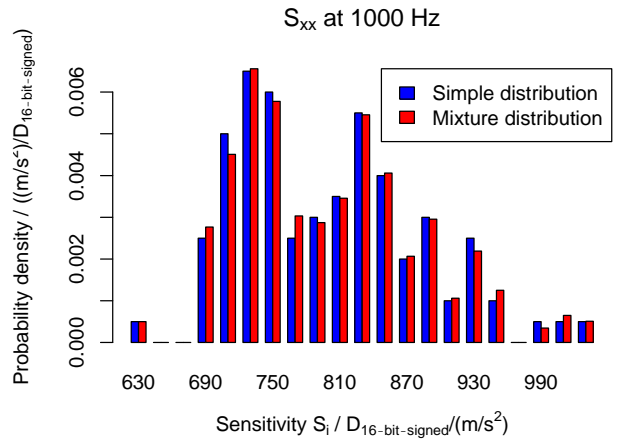


Fig. 7. Mixture and simple distribution of the 100 MEMS x -axis main sensitivities at 1000 Hz.

IV. INFLUENCE OF THE COVARIANCE TERMS ON MIXTURE DISTRIBUTIONS

As previously described, to rigorously get the mixture distributions, covariance terms should not be neglected since the same calibration system is used for all MEMS. The uncertainty contribution due to the calibration system, in terms of variance, weights around 50 % of the overall combined square uncertainty. A comparison of the mixture distribution obtained by considering correlated or uncorrelated calibration results is performed. In the second case, covariance terms are set to 0 and the effects on the resulting distributions are shown. By way of example, the mixture distributions of correlated and uncorrelated S_{zz} sensitivities at 5 Hz are shown in Fig. 8. It is found that the impact of the correlation is minimal compared with the mixture distribution of uncorrelated values.

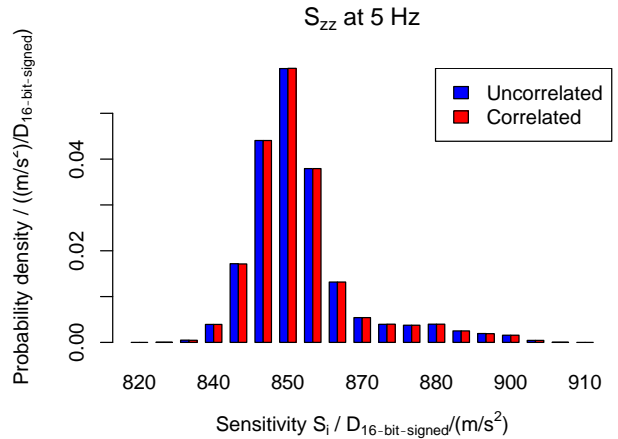


Fig. 8. Mixture distributions of the 100 MEMS z -axis main sensitivities at 5 Hz for uncorrelated or correlated values.

V. FITTING OF THE MIXTURE DISTRIBUTIONS

The above-reported distributions in histogram form, given their highly non-normal behaviour, are then fitted with Johnson's unbounded SU and bimodal distributions (the latter obtained as a mixture of two normal distributions) in order to get continuous distributions. As an example, Johnson's and bimodal functions fitting is applied to the mixture distributions of x -axis sensitivities at 5 Hz and 1000 Hz, which represent two different cases. Results are shown in Figs. 9 and 10, respectively. In general, it is found that a mixture of two normal distributions fits the data trends histogram more accurately, especially when it is evident a bimodal distribution of the data.

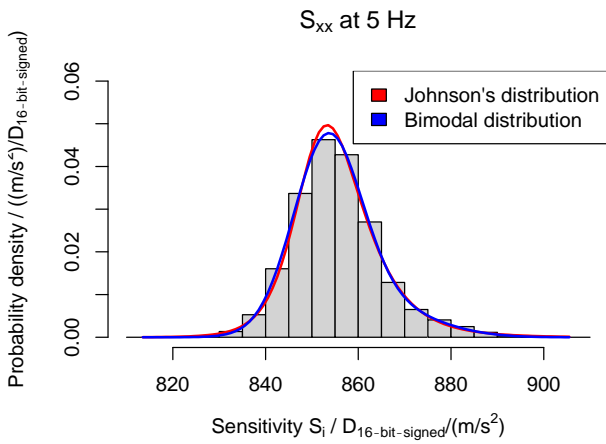


Fig. 9. Mixture distribution of the 100 MEMS x -axis main sensitivities at 5 Hz with Johnson's and bimodal distribution fittings

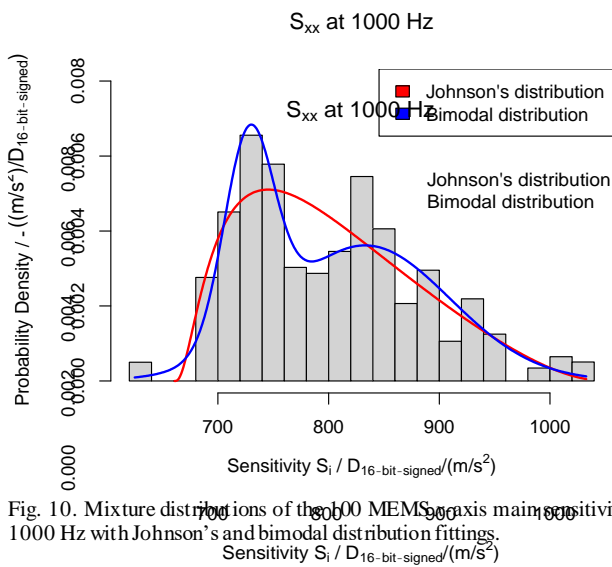


Fig. 10. Mixture distributions of the 100 MEMS x -axis main sensitivities at 1000 Hz with Johnson's and bimodal distribution fittings.

VI. CONCLUSIONS

Accurate batch sensitivities distributions are the basis for developing large-scale statistical calibration methods required for low-cost sensors to guarantee traceable measurements. In this work, a mixture distribution modelling of the sensitivities related to a batch of 100 digital 3-axis MEMS accelerometers is implemented. The batch is calibrated along the three axes in a frequency range from 5 Hz to 1000 Hz, hence sensitivities can be expressed as function of axis and frequency. The mixture distribution allows taking into account the calibration uncertainties, associated with each MEMS, as well as the correlations between MEMS sensitivity values. It is found that differences between the mixture and the simple sensitivities distributions (the latter without the inclusion of uncertainties or correlations) are higher at increasing relative uncertainties, as expected. This confirms the necessity to include the uncertainties in the evaluation of the batch sensitivities distribution, although methods to reduce them are under development [20]. Correlation does not seem to play a crucial role, in the present example, but it is important to consider it in the mixture model for the sake of general applicability of

the proposed procedure. Mixture distributions are then fitted with Johnson's and bimodal probability density functions. It is found that bimodal one is more accurate to represent the batch sensitivity distributions. Such behaviour provides also important information to the manufacturer about the MEMS production process.

REFERENCES

- [1] G. Ciuti, L. Ricotti, A. Menciasci, and P. Dario, "MEMS sensor technologies for human centred applications in healthcare, physical activities, safety and environmental sensing: a review", *Research Activities in Italy Sensors (Basel)* 15(3), pp. 6441–6468, 2015.
- [2] Eichstädt, S., Gruber, M., Vedurmudi, A.P., Seeger, B.; Bruns, T., Kok, G., "Toward Smart Traceability for Digital Sensors and the Industrial Internet of Things", *Sensors*, 21(6), 2019.
- [3] Eichstädt, S., "From dynamic measurement uncertainty to the Internet of Things and Industry 4.0", In *IEEE International Workshop on Metrology for Industry 4.0 and IoT*, 2021.
- [4] BIPM - Consultative Committee for Acoustics, Ultrasound, and Vibration (CCAUV), Strategy plan 2019 to 2029, (2019). [Online]. Available: <https://www.bipm.org/utis/en/pdf/CCAUV-strategy-document.pdf>, Accessed on: Jan. 4, 2022.
- [5] C. Del-Valle-Soto, C. Mex-Perera, J. A. Nolasco-Flores, R. Velázquez and A. Rossa-Sierra, *Wireless Sensor Network Energy Model and Its Use in the Optimization of Routing Protocols*, *Energies* 13(3), 728, 2020.
- [6] A. Prato, F. Mazzoleni, F. R. Pennechi, G. Genta, M. Galetto, A. Schiavi, "Towards large-scale calibrations: a statistical analysis on 100 digital 3-axis MEMS accelerometers," 2021 *IEEE International Workshop on Metrology for Industry 4.0 & IoT*, pp. 578-582, 2021.
- [7] A. Prato, F. Mazzoleni, and A. Schiavi, "Metrological traceability for digital sensors in smart manufacturing: calibration of MEMS accelerometers and microphones at INRiM," In *II Workshop on Metrology for Industry 4.0 and IoT*, pp. 371-375, 2019.
- [8] N. L. Johnson, "Systems of Frequency Curves Generated by Methods of Translation", *Biometrika*, 36(1/2), pp. 149–176, 1949.
- [9] Améndola, C.; Engström, A.; Haase, C., "Maximum number of modes of Gaussian mixtures", *Information and Inference: A Journal of the IMA*, 9 (3), pp. 587–600, 2020.
- [10] ISO 16063-21, *Methods for the calibration of vibration and shock transducers — Part 21: Vibration calibration by comparison to a reference transducer*. ISO (Geneva: International Organization for Standardization), 2003.
- [11] A. Prato, F. Mazzoleni, and A. Schiavi, "Traceability of digital 3-axis MEMS accelerometer: simultaneous determination of main and transverse sensitivities in the frequency domain," *Metrologia*, 57(3), p. 035013, 2020.
- [12] A. Prato, N. Montali, C. Guglielmo and A. Schiavi, "Pressure calibration of a digital microelectromechanical system microphone by comparison," *The Journal of the Acoustical Society of America* 144, EL297, 2018.
- [13] A. Prato, A. Schiavi, F. Mazzoleni, A. Touré, G. Genta, M. Galetto, "A reliable sampling method to reduce large set of measurements: a case study on calibration of digital 3-axis MEMS accelerometers", In *IEEE International Workshop on Metrology for Industry 4.0 and IoT*, 2020.
- [14] A. Schiavi, A. Prato, F. Mazzoleni, G. D'Emilia, A. Gaspari, and E. Natale, "Calibration of digital 3-axis MEMS accelerometers: A double-blind «multi-bilateral» comparison," In *IEEE International Workshop on Metrology for Industry 4.0 & IoT*, 2020.
- [15] A. Prato, F. Mazzoleni, G. D'Emilia, A. Gaspari, E. Natale, A. Schiavi, "Metrological traceability of a digital 3-axis MEMS accelerometers sensor network", *Measurement*, 18, 2021.
- [16] A. Prato, A. Schiavi, F. Mazzoleni, A. Touré, G. Genta, M. Galetto, "A reliable sampling method to reduce large set of measurements: a case study on calibration of digital 3-axis MEMS accelerometers", In *IEEE International Workshop on Metrology for Industry 4.0 and IoT*, 2020.
- [17] Seidel, Wilfried, "Mixture models", in Lovric, M. (ed.), *International Encyclopedia of Statistical Science*, Heidelberg: Springer, pp. 827–829, 2010.
- [18] <https://www.rdocumentation.org/packages/SimDesign/versions/1.9/into/pics/rmvnorm>, Accessed on: January 8th 2022.
- [19] M. Galetto, A. Schiavi, G. Genta, A. Prato and F. Mazzoleni, "Uncertainty evaluation in calibration of low-cost digital MEMS accelerometers for advanced manufacturing applications," *CIRP Annals* 68, 535-538, 2019.
- [20] Gaitan M., Lopez Bautista I. M., Geist J., "Reduction of calibration uncertainty due to mounting of three-axis accelerometers using the intrinsic properties model", *Metrologia*, 58, 035006, 2021.